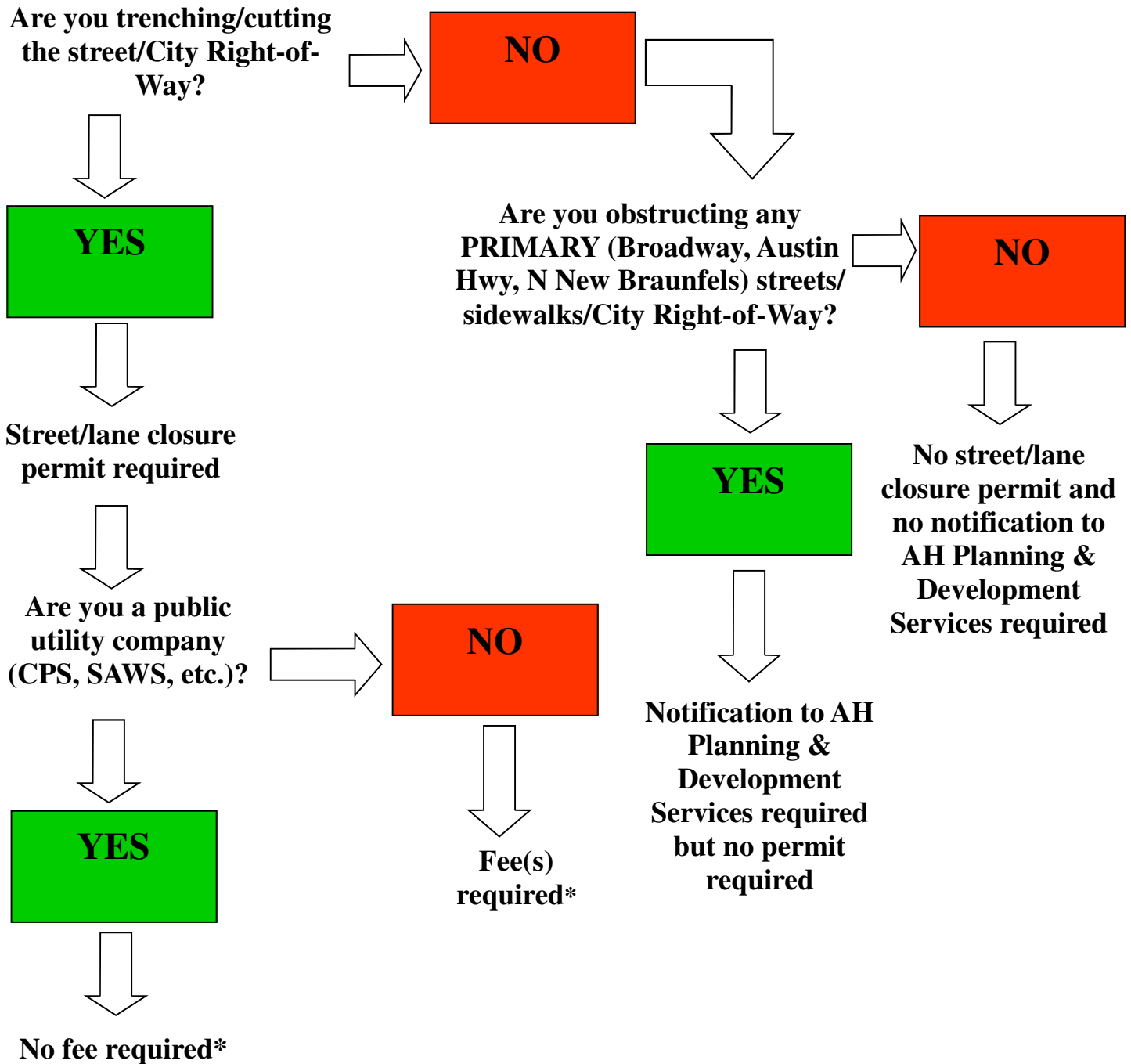


**City of Alamo Heights  
Street/Lane/Sidewalk Closure Permit Process**

**Flow Chart**



\*Provide staff with a completed permit application, map/plan (Google, hand-drawn, etc.) of obstructed Right-of-Way (ROW) and square footage of obstructed City ROW area, date(s) and times of obstruction. Permit(s) are typically issued over-the-counter between 8 am and 1 pm Mon-Fri. Call (210) 826-0516 for more information.