

City of Alamo Heights



Lane Closure – Broadway – Mon. February 15th through Tues. February 23rd

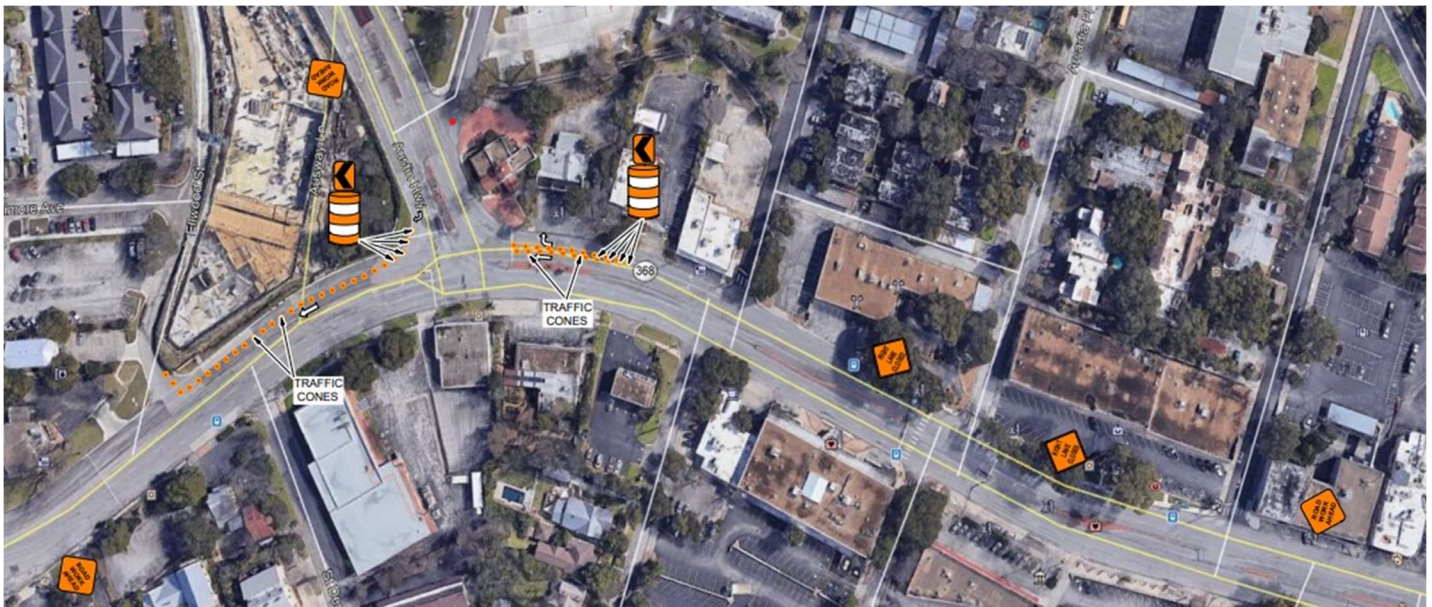
Scope of Work

East lane of Broadway between Austin Highway and Ellwood will be closed beginning Monday, February 15th through Tuesday, February 23rd daily from 7am to 6pm. Rampart Construction will be fixing portions of street paving as part of the Broadway/Ellwood project.

Traffic Impacts

- East lane closed – Broadway between Austin Highway and Ellwood
- Monday, February 15th through Tuesday, February 23rd
- Daily from 7am to 6pm

Map of Construction Areas



Outreach and Construction Contacts:

City of Alamo Heights

Nina Shealey

Director of Community Development

210-832-2250

nshealey@alamoheightstx.gov