

# City of Alamo Heights



## Street Closure – Ellwood – Monday, October 21, 2019

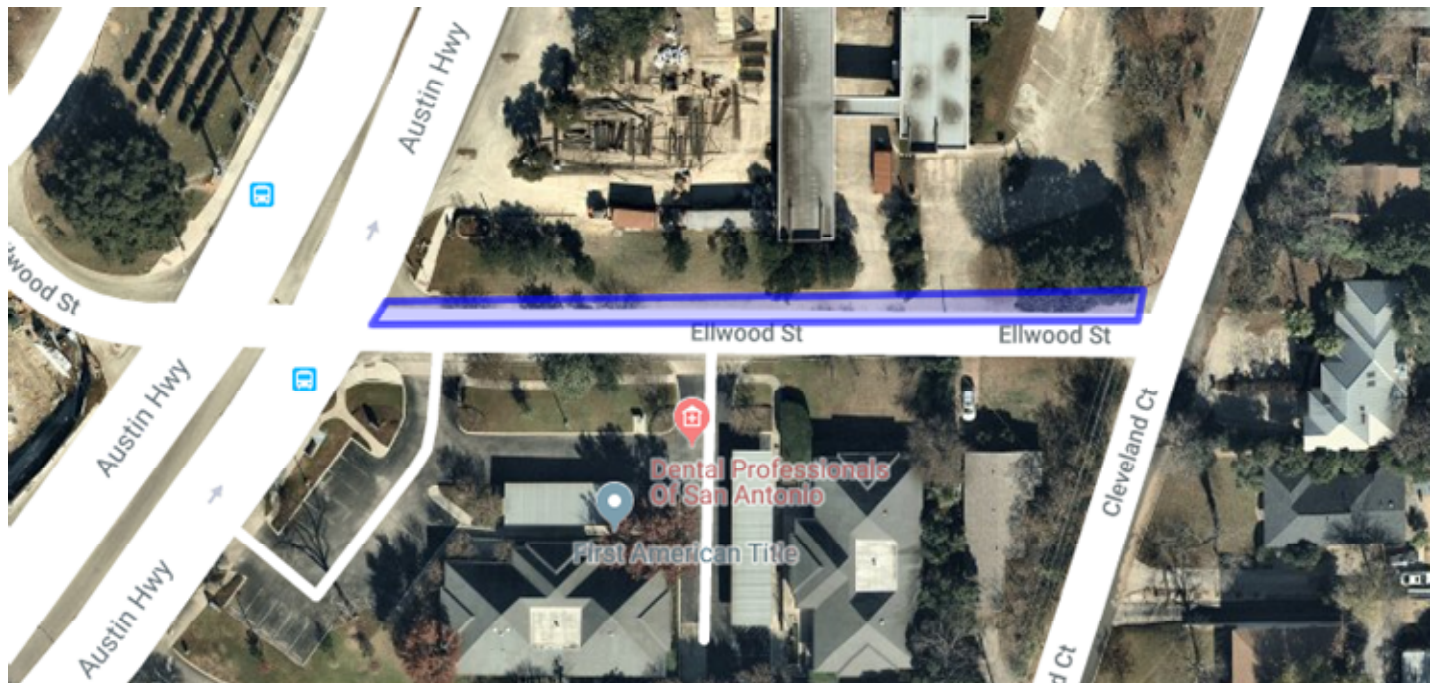
### Scope of Work

The northern lane of Ellwood Street will be closed between Austin Highway and Cleveland Court, on Monday, October 21st. Page Construction will be installing construction fencing in support of the redevelopment of 200 Austin Highway.

### Traffic Impacts

- Northern lane of Ellwood between Austin Highway and Cleveland Court
- 6:00am – 4:00pm

### Map of Construction Areas



### Outreach and Construction Contacts:

#### City of Alamo Heights

Nina Shealey

Director of Community Development

210-832-2250

[nshealey@alamoheightstx.gov](mailto:nshealey@alamoheightstx.gov)