



VEGETATION MANAGEMENT BRIEFING

*Presented by
CPS ENERGY*

April 25, 2022

Informational Update

AGENDA

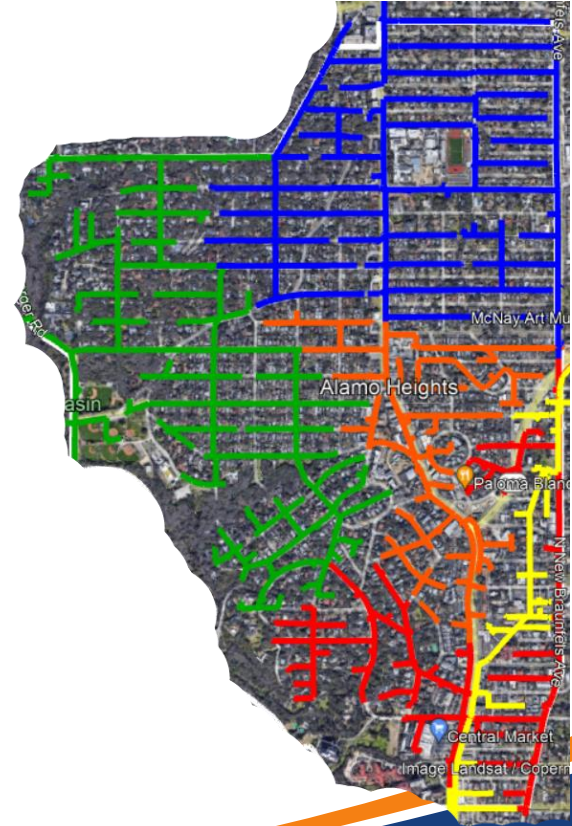


- **BACKGROUND**
- **RELIABILITY SUMMARY**
- **VEGETATION ENCROACHMENT**
- **VEGETATION MANAGEMENT PROGRAM**
- **COMMUNICATION PLAN**

BACKGROUND

OVERHEAD (OH) INFRASTRUCTURE

- Alamo Heights has 5 main OH distribution lines feeding the majority of the 4,200 customers in the City
- These overhead power lines throughout the city have several areas where trees are interfering with power lines
- Several of these power lines route through customer's back yards in between two lots – will have to rely on community to access these areas for trimming



RELIABILITY SUMMARY

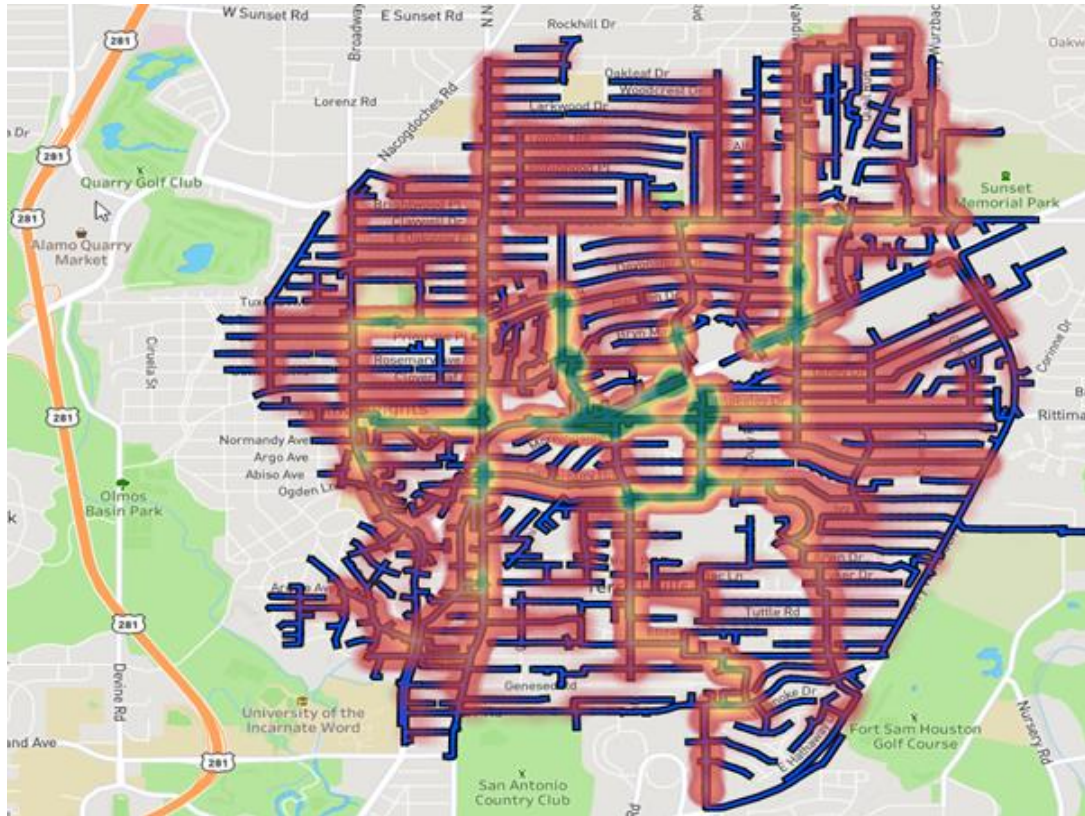
A 12 month overview of Alamo Heights Reliability (4/1/2021 – 4/19/2022) found:

- Majority (41 outages) were caused by trees interfering with powerlines during thunderstorm events
- Winter Storm Landon (Feb 3, 2022) led to extended outages for 58 customers – ice on trees was the primary cause of outages
- 2021 Memorial Day (Thunderstorms) – trees were also primary cause of these outages (2245 customers experienced 9+ hours)
- June 2019 (Lightning storm): 21 hour outage for 343 customers which was caused by trees obstructing power lines



VEGETATION ENCROACHMENT

AREA LAST TRIMMED IN 2016

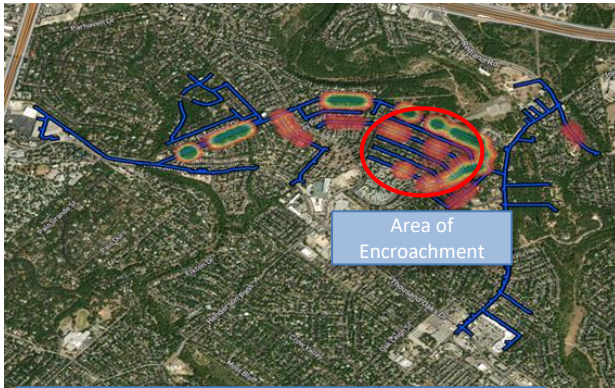


- CPS Energy's required vegetation clearance is 10ft from power lines
- Heat map indicates areas of encroachment within 10ft of distribution lines based on LiDAR data

Note: LiDAR → Light Detection and Ranging

VEGETATION ENCROACHMENT

1



Area of Encroachment

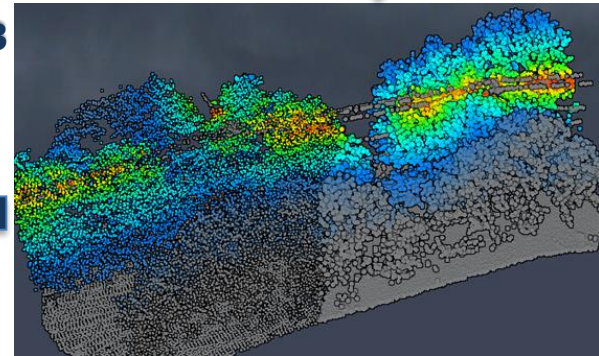
High-level LiDAR view of a Neighborhood

2



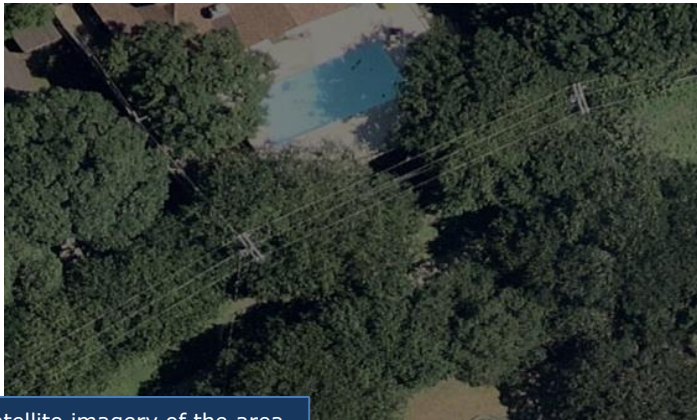
Zoomed-in view of a street with encroachment

3



3-D visualization of vegetation-to-power line contact

4



High-resolution satellite imagery of the area

VEGETATION MANAGEMENT

RELIABILITY SUCCESS STORIES

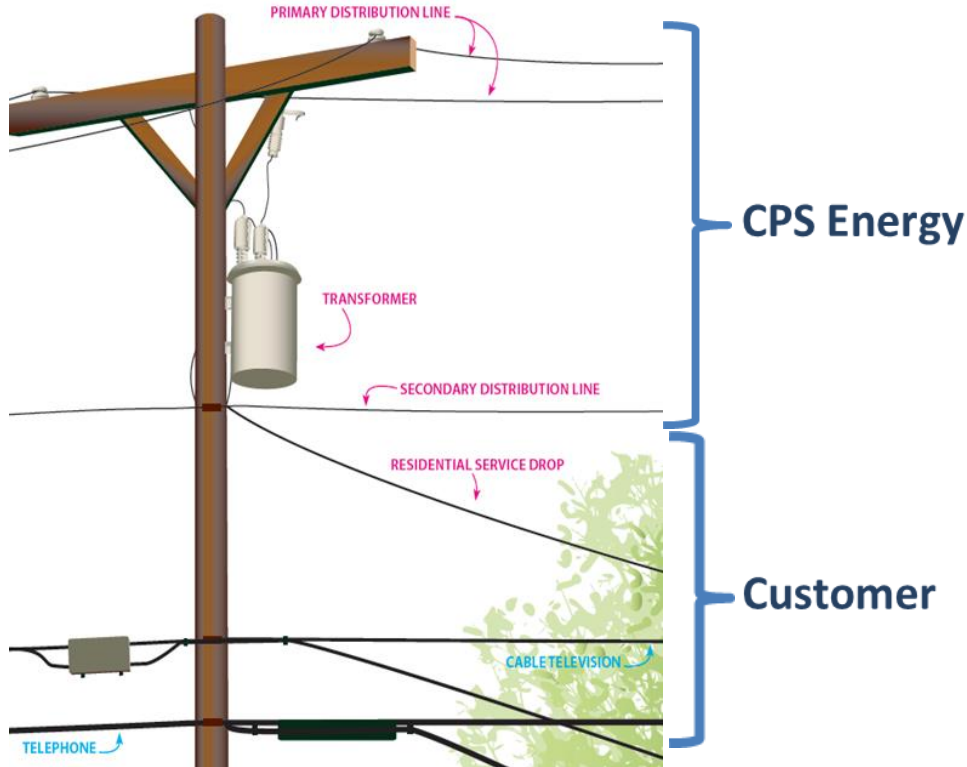


Trimming Date	Average outage duration in 2021	Average outage duration in 2022 (YTD)
Nov 21 - Jan 22	110 minutes	71 minutes
Jan 22 - Jan 22	20.5 minutes	4.6 minutes
Dec 21 - Mar 22	134 minutes	0.00 minutes

On an average, targeted tree trimming in 3 different areas of our service territory resulted in an average of **60% improvement** in reliability.

VEGETATION MANAGEMENT

TRIMMING PROGRAMS



Types of trimming work:

- Local Development
- Emergency trimming
- Routine planned trimming for reliability
- Customer requested inspection and trimming for clearance of primary and secondary conductor

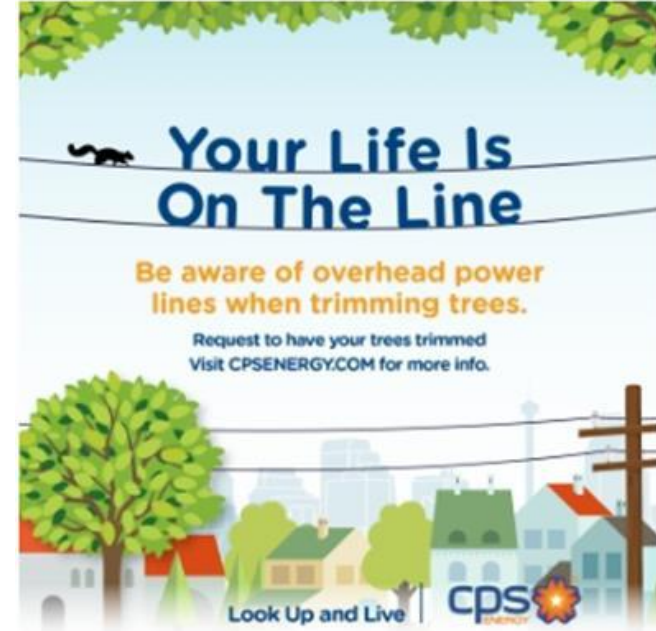
Typical tree trim clearance distance:

- 10' high voltage
- 8' neutral

VEGETATION MANAGEMENT




- Our vegetation management program is an integral part of increased reliability for customers
- We are committed to working with our customers to achieve this
- Clearances are critical to maintain our system
- We have qualified and certified personnel & contractors to ensure safety for our crews and health of the trees
- For trimming of service drop, customers are encouraged to call to schedule a temporary disconnect to ensure safety
 - Call **210-353-2222** with questions



COMMUNICATION PLAN



- Meet with AH City Council 
- Partner with the City to communicate with customers through a variety of media (social media, newsletters, emails, etc)
- Weather permitting:
 - First two weeks of May – door hangers on customers’ homes
 - Third week of May– Trimming begins




GUÍA PARA SELECCIONAR Y PLANTAR ÁRBOLES CERCA DE LOS CABLES ELÉCTRICOS

Los árboles pequeños con una altura madura de 15-30 pies son los más deseables para la siembra cerca de líneas de servicios públicos. Estos incluyen: Crepmyrtia (variedades de bajo crecimiento), Logani, Casah, Redbud Americano, Laurel de Montaña de Texas, Collar de Oro, Yucca y Gramma, Atlas, Rusty Viburnum, Wild Olive y Yucca.

Los árboles de tamaño mediano con una altura madura de 30-40 pies deben ser plantados por lo menos 20 pies al lado de las líneas aéreas de servicio público. Estos incluyen: pino de piedra, Anaca, para decorativa, olmo del oeste, variedades altas de Crepmyrtia, Cypress como, Soapberry y roble de uncaje.

Los árboles grandes que crecen a más de 40 pies de altura o con una corona ampliamente extendida deben estar alejados por lo menos 50 pies al lado de las líneas de servicios públicos. Estos incluyen: Oaks (Bar, Live, Texas, Español y Chiquiquil), Pecan, Ash, Sycamore y Pistacho chino.

Zonas de siembra seguras y espadas de poda típicas



NOTICE OF TREE TRIMMING WORK

To ensure reliable electric service to you and your neighbors, a certified line clearance tree trimming contractor, **Asplundh**, will be in your area within 3 weeks from today to perform tree trimming activities on our behalf.

Following accepted arboricultural standards, a ten foot clearance to all sides of high voltage lines is necessary. CPS Energy uses only trained and qualified contractors to perform work at no cost to you.

It is not necessary for you to be home while the work is being performed. If preferred, please call 353-2222 between 7:00 am and 3:30 pm to schedule an appointment.

With property owner's permission, the tree can be removed to ground level.

Please call the number above for more information.

Visit cpsenergy.com/treetrimming for more information

Date: _____

ASPLUNDH

Thank you for being our customer and allowing us to serve you.

cpsenergy.com
Follow us on Facebook and Twitter

Weekly updates will be provided to the City on the progress of trimming



Thank You