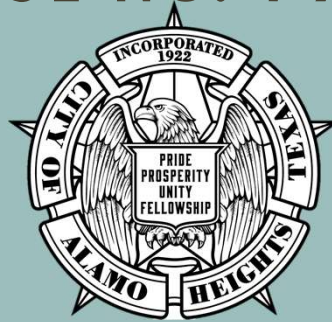


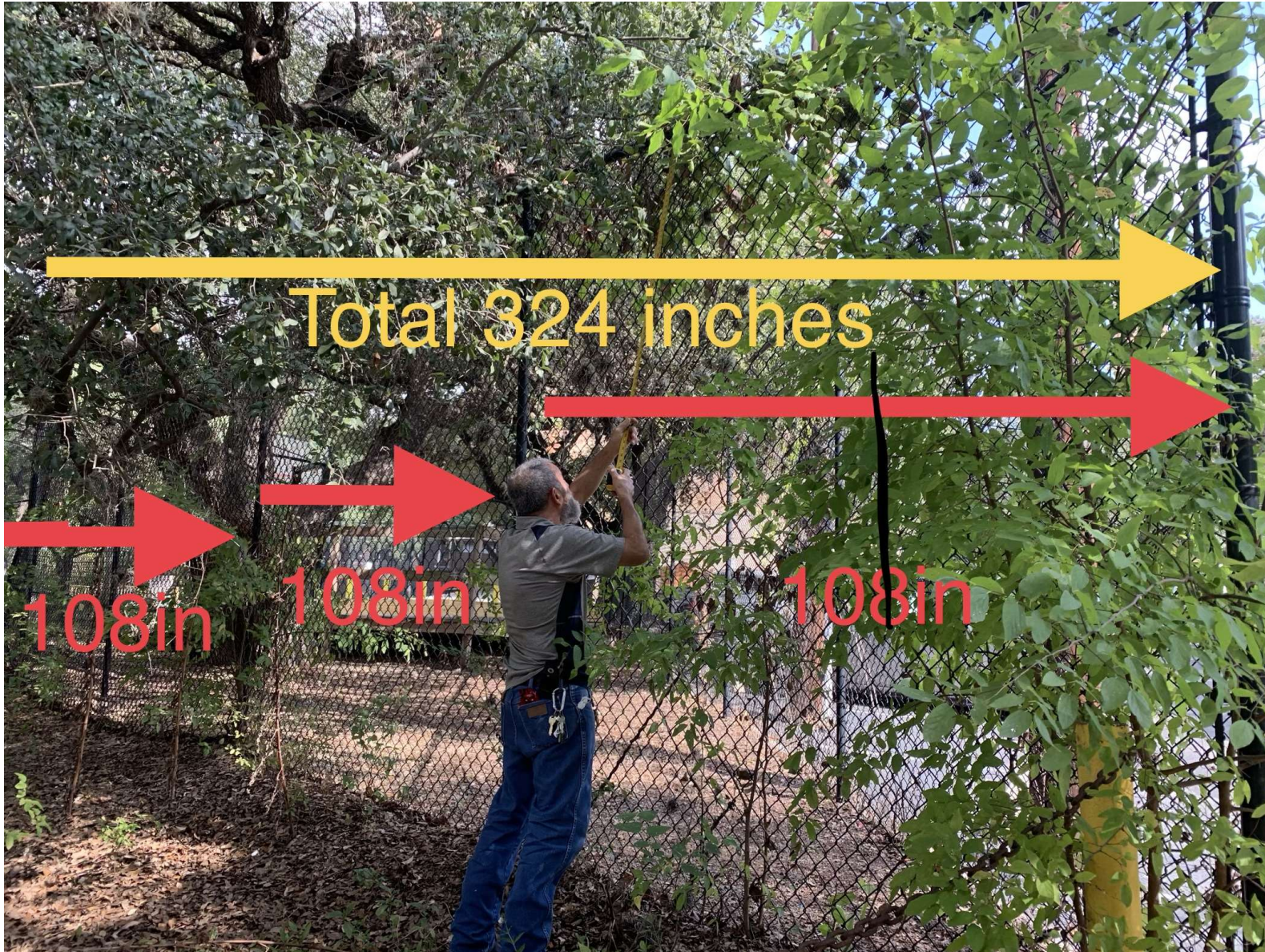
ARCHITECTURAL REVIEW BOARD CASE NO. 797S



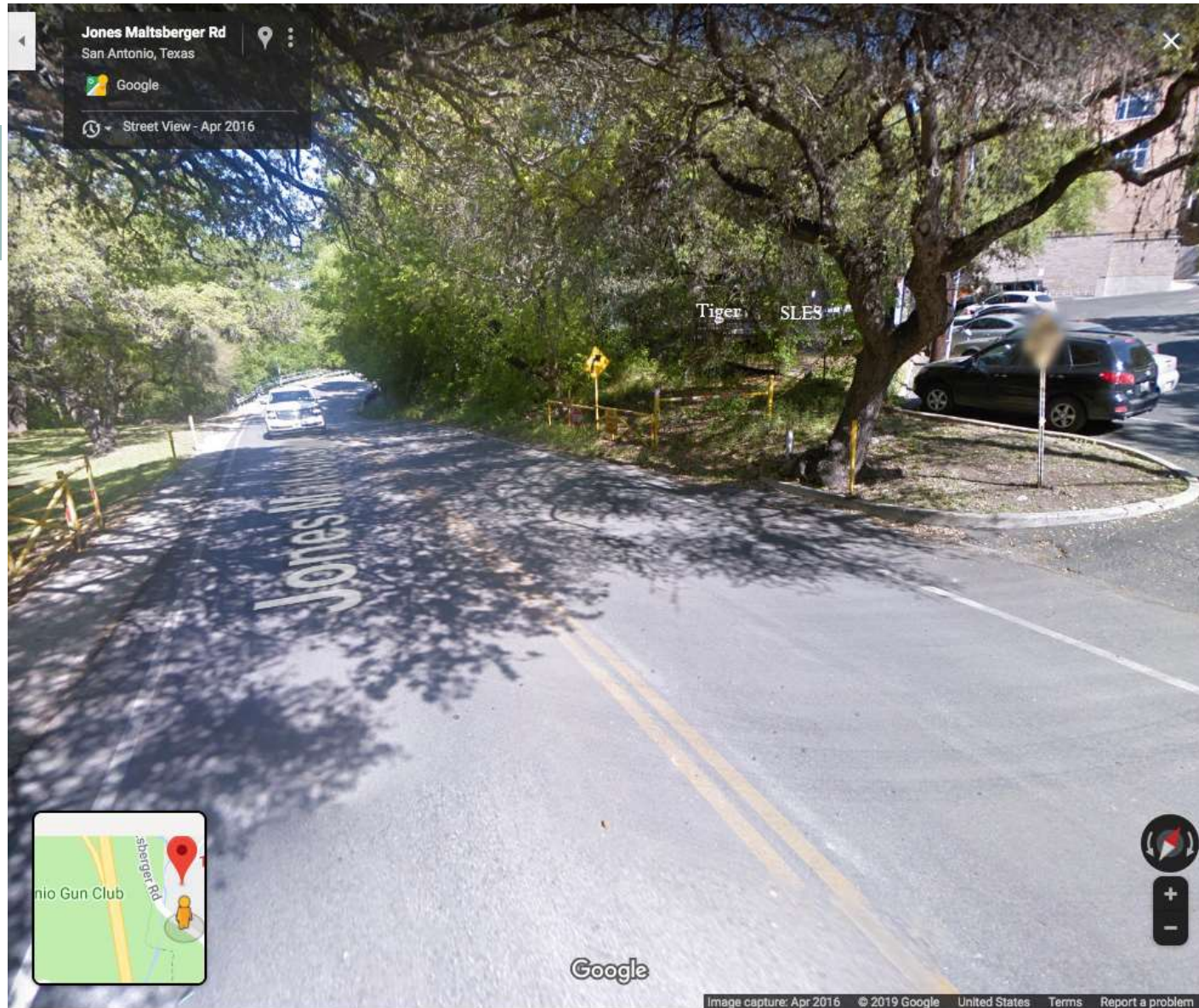
MAY 19, 2020

SIGN — 11 ST. LUKE'S LANE

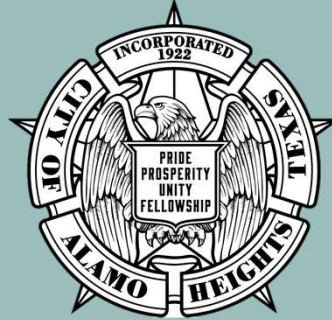
Community Development
Services







ARCHITECTURAL REVIEW BOARD CASE NO. 798S



MAY 19, 2020

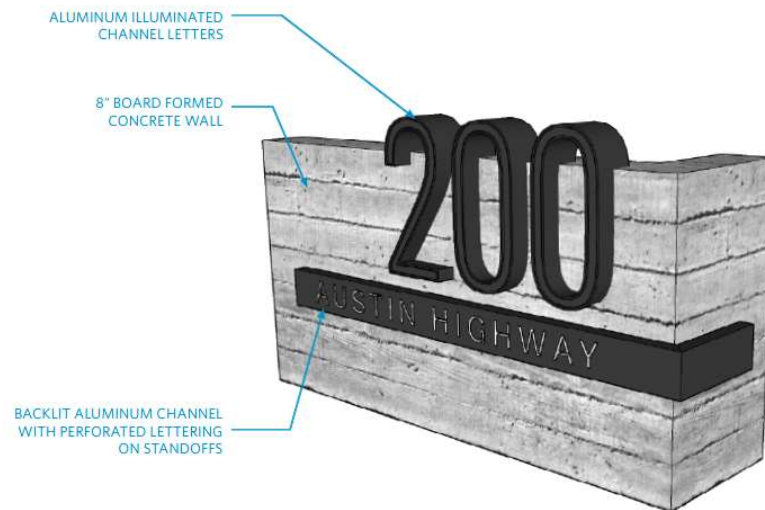
SIGN — 200 AUSTIN HWY

Community Development
Services

LEGAL DESCRIPTION
LOTS 19-33, BLOCK 70
ALAMO HEIGHTS
(VOL 105, PAGES 4-10 PR)



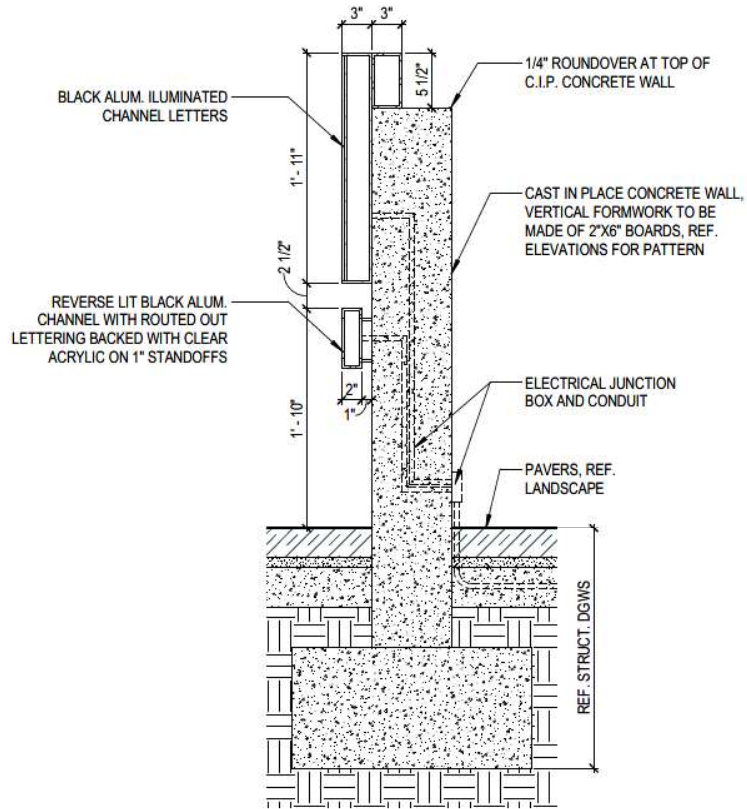
200 AUSTIN HIGHWAY



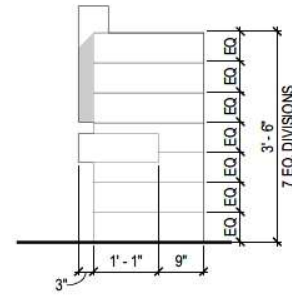
Front Elevation



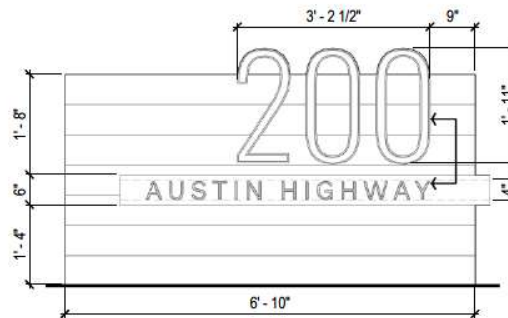
Side Elevation



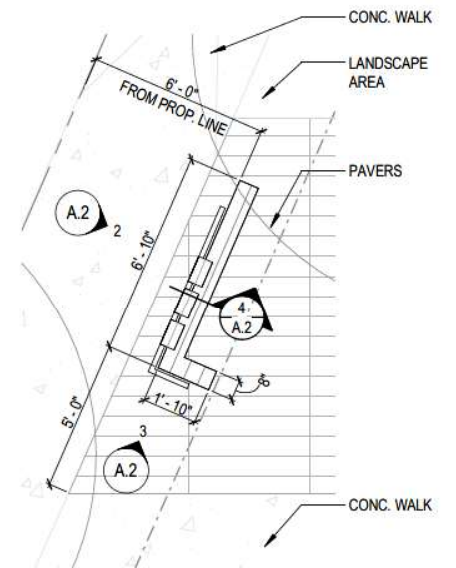
SIGN SECTION 4
1" = 1'-0"



SIGN ELEVATION 3
1/2" = 1'-0"



SIGN ELEVATION 2
1/2" = 1'-0"



MONUMENT SIGN PLAN 1
1/4" = 1'-0"



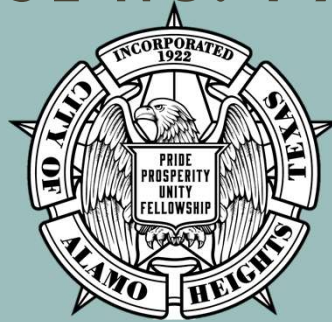
Existing Conditions at Austin Highway Street Frontage Looking North



Existing Conditions at Austin Highway Street Frontage Looking South



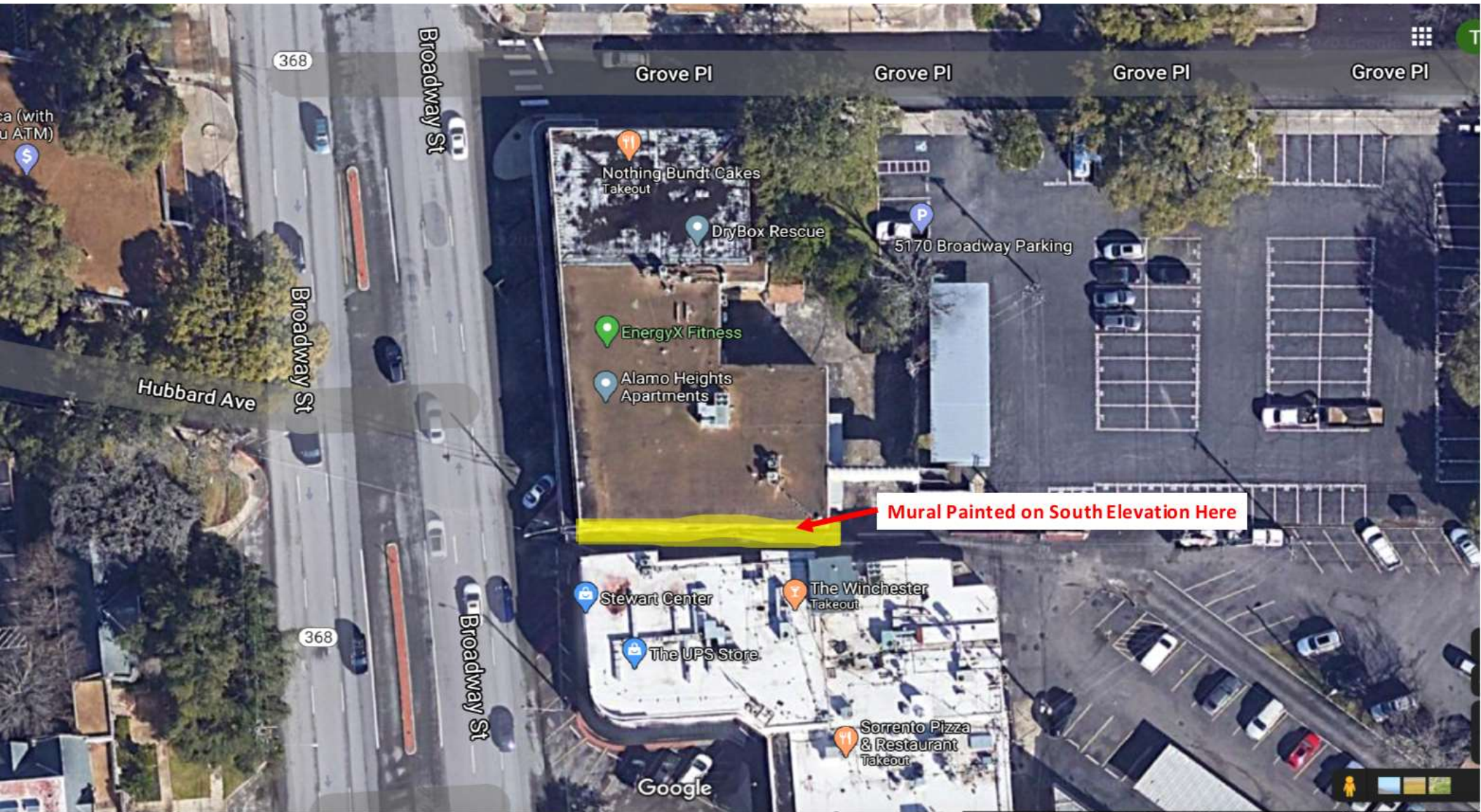
ARCHITECTURAL REVIEW BOARD CASE NO. 799S



MAY 19, 2020

SIGN — 5154 BROADWAY

Community Development
Services



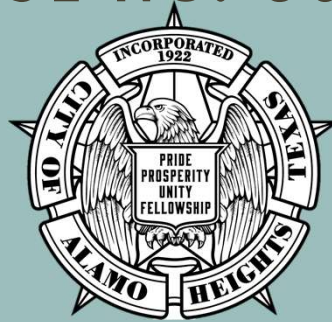








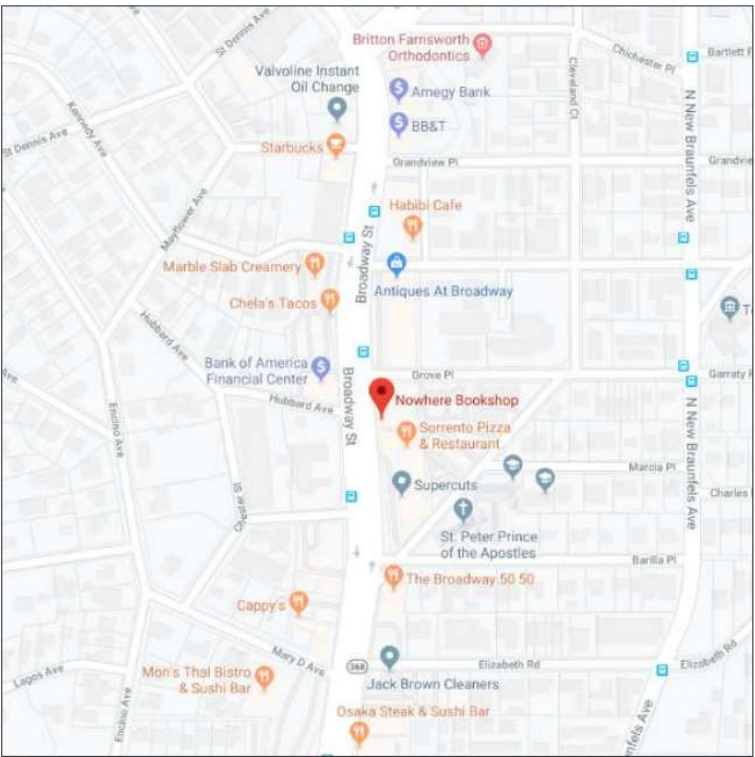
ARCHITECTURAL REVIEW BOARD CASE NO. 800S



MAY 19, 2020

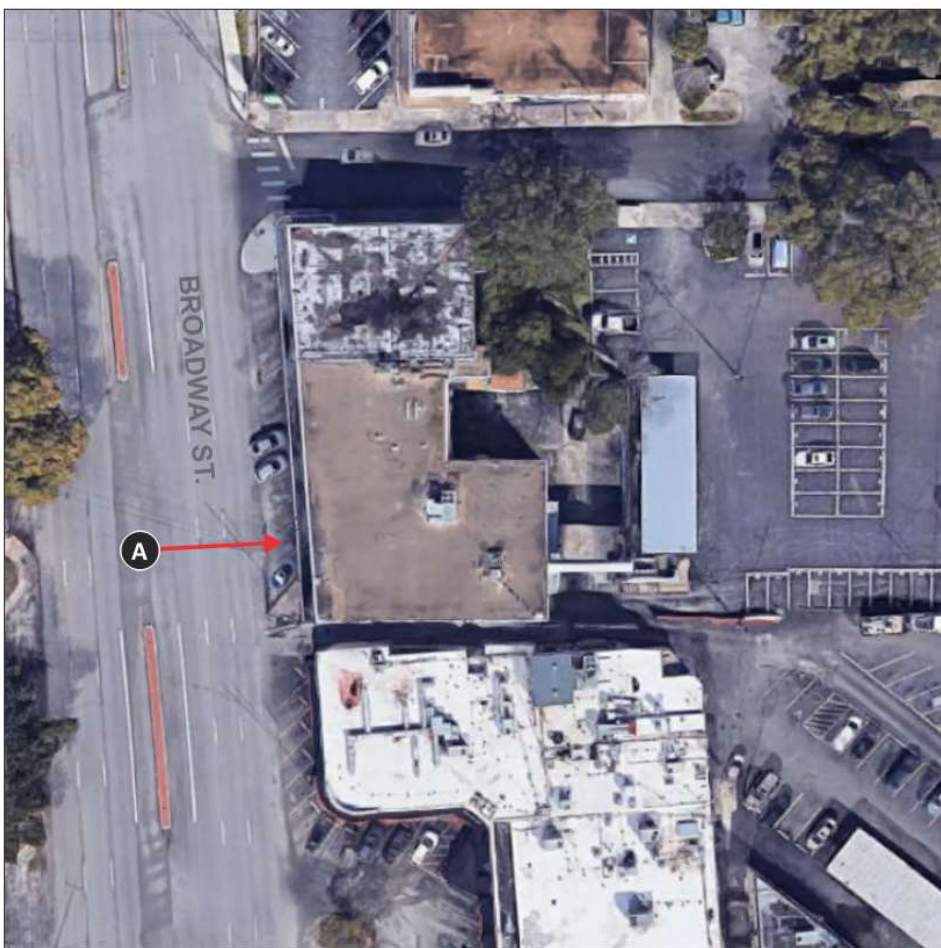
SIGN — 5154 BROADWAY

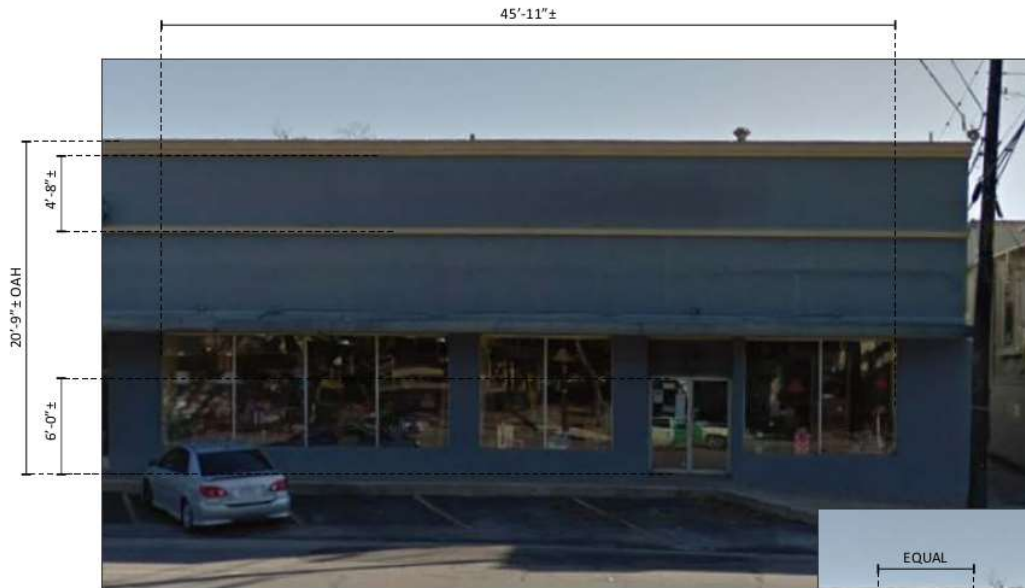
Community Development
Services



VICINITY AND AERIAL MAP

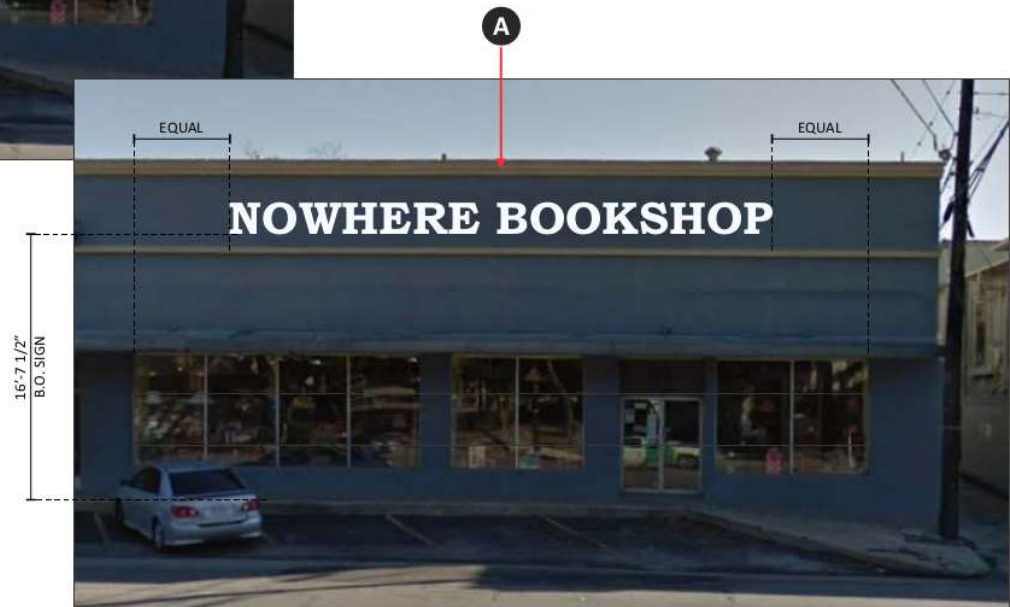
NTS





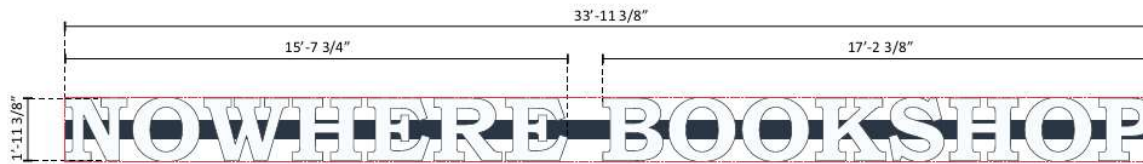
EXISTING ELEVATION

SCALE: 1/8" = 1' - 0"



PROPOSED ELEVATION

SCALE: 1/8" = 1' - 0"

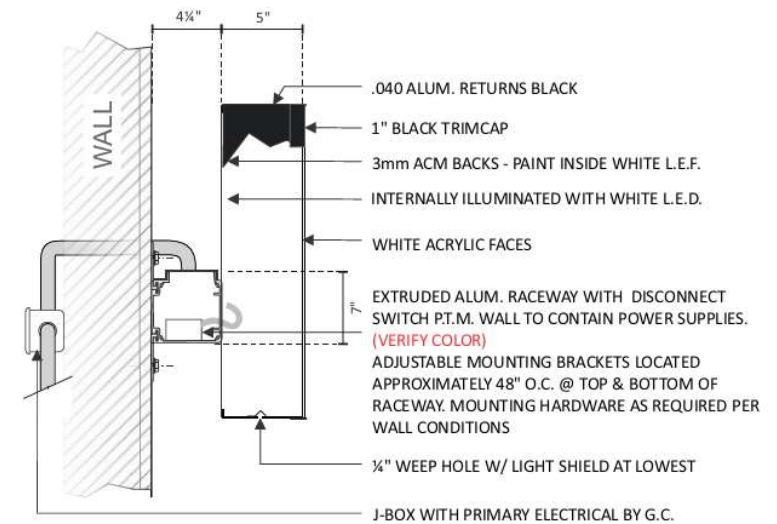


SIDE

A FACE-LIT CHANNEL LETTERS / RACEWAY
ONE [1] REQUIRED - MANUFACTURE & INSTALL

SCALE: 1/4" = 1' - 0"
68.15 SQ. FT.

ILLUMINATED W/ WHITE LED'S



CHANNEL LETTER SECTION

SURVEY REQUIRED

VERIFY WALL DIMENSIONS AND ACCESS BEHIND WALL
VERIFY WALL COLOR FOR RACEWAYS