



## CITY NEWS

YOUR OFFICIAL  
SOURCE FROM  
CITY HALL

OCTOBER 2019

# New Voting Machines

Bexar County purchased new voting machines to be used in the **November 5th Constitutional Amendment Special Election and future elections.**



**New voting machines** - The diagram above displays the steps required to cast your ballot. The voter will receive a ballot card, insert the ballot card into the new voting machine and elect choices on a touch screen. The Americans with Disabilities Act (ADA) touch screen machine will print out the electronic ballot which is deposited into an electronic tabulator. During the voting process, a voter may change the font size, choose preferred language, and verify selections.

## Voter Centers in Bexar County

During the November election, voters can vote at any Bexar County designated polling site.

**Voter Center Model** – With the Voter Center Model, the voter can vote at any Bexar County Election Day designated polling sites just as similar to Early Voting. Early Voting allows a voter to vote anywhere Bexar County has designated as their polling sites during Early Voting period. On Election Day, voters can vote at **any** polling site (voter center) within Bexar County. The Voter Center Model has been adopted to decrease the number of provisional ballots and provide additional convenience. If successful, this may be the model for all future elections.

The City of Alamo Heights does not have any city-related items on the November 5th Special Election ballot; however, City Hall will be a Voter Center (polling site) on Tuesday, November 5th as a Election Day polling site from 7 a.m. – 7 p.m.

## BRIEFS

### Daylight Savings Time

**Sunday, November 3rd** is the time to “fall back” and also give your smoke detectors a fresh start.

Remember to change your clock time and also to change the batteries in your smoke detectors.

Smoke detectors are only as effective as the batteries that keep them “looking” for smoke.

### National Take Back Day

AHPD officers will receive potentially dangerous, expired, unused, and unwanted prescription drugs, no questions asked.

Anyone wishing to drop off unwanted prescription drugs may bring them to the driveway at the east entrance to City Hall where an AHPD officer will receive them.

*When: Saturday, Oct. 26th*

*Time: 10 a.m. to 2 p.m.*

*Where : AH City Hall  
6116 Broadway*

# CITY CALENDAR

## OCTOBER

Tuesday, October 15  
Architectural Review  
Board Meeting  
5:30 p.m.

Monday, October 28  
City Council Meeting  
5:30 p.m.



## NOVEMBER

Monday, November 5  
Planning and Zoning Meeting  
5:30 p.m.

Wednesday, November 6  
Board of Adjustment Meeting  
5:30 p.m.

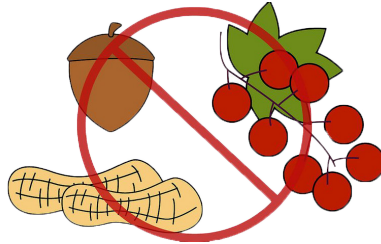
Monday, November 11  
Holiday – Veteran's Day  
Offices Closed\*

Tuesday, November 12  
City Council Meeting  
5:30 p.m.

\*REGULAR GARBAGE PICK-UP

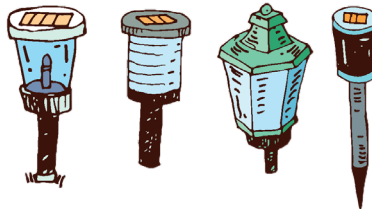
# How to Deter Skunks

Skunks are omnivores that can live off of human garbage, so they often take up residence in yards and under decks. Here are some steps to keep skunks away, involving habitat modification and food sources.



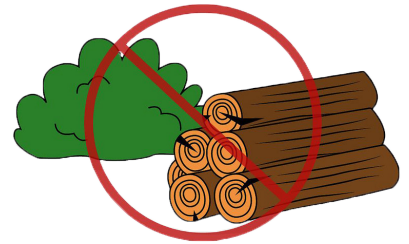
## REMOVE NUTS, BERRIES AND OTHER NATURAL FOOD SOURCES

- If you have trees that produce nuts, berries, or other fruits, rake them up.
- If you have a garden, harvest ripe fruit and vegetables as soon as you can.
- Use a tray under your bird feeder to catch most of the seeds, and clean up stray seeds dropped by birds.



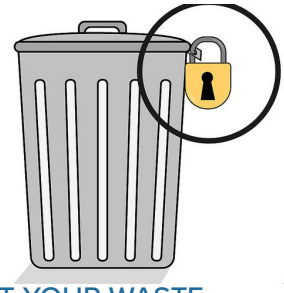
## INSTALL LIGHTS IN YOUR YARD

- Skunks are nocturnal and shy away from bright lights.
- Consider using solar lighting or motion sensor lights.



## CLOSE OFF HIDING PLACES

- Skunks like to make their home under decks, porches and other sheltered areas. Close off spaces.
- Trim back bushes and low vegetation.
- Remove log piles or building materials.



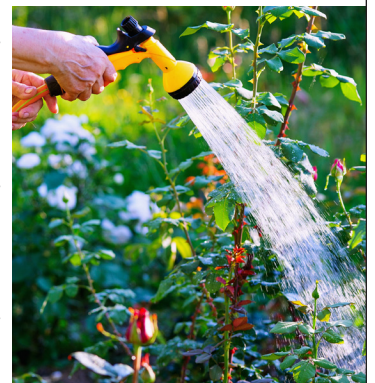
## PROTECT YOUR WASTE

- Keep your trash cans properly sealed.
- Store trash bins/cans in a shed or in your garage at night, so their smell doesn't attract skunks.

# Winter Averaging for Sewer Fees

Reminder: your water consumption during the winter months affects your residential sewer service fee for the next year. Residential sewer service fees are calculated based on the average water usage during three consecutive billing periods. This year your November, December and January consumption will be used for your winter averaging.

For more information or questions, please call Utility Billing staff at 882-1507.



# ALAMO HEIGHTS Texas

## USEFUL PHONE NUMBERS

911 for EMERGENCY  
Fire/EMS (Non-Emergency): 824-1281  
Police (Non-Emergency): 822-3321  
Administration and Finance: 822-3331

Public Works: 882-1518  
Water: 882-1507  
Community Development: 826-0516  
Court Clerk: 882-1501