



CITY OF ALAMO HEIGHTS
COMMUNITY DEVELOPMENT SERVICES DEPARTMENT
6116 BROADWAY
SAN ANTONIO, TX 78209
210-826-0516

**Board of Adjustment Meeting
Wednesday, June 03, 2026 – 5:30 P.M.**

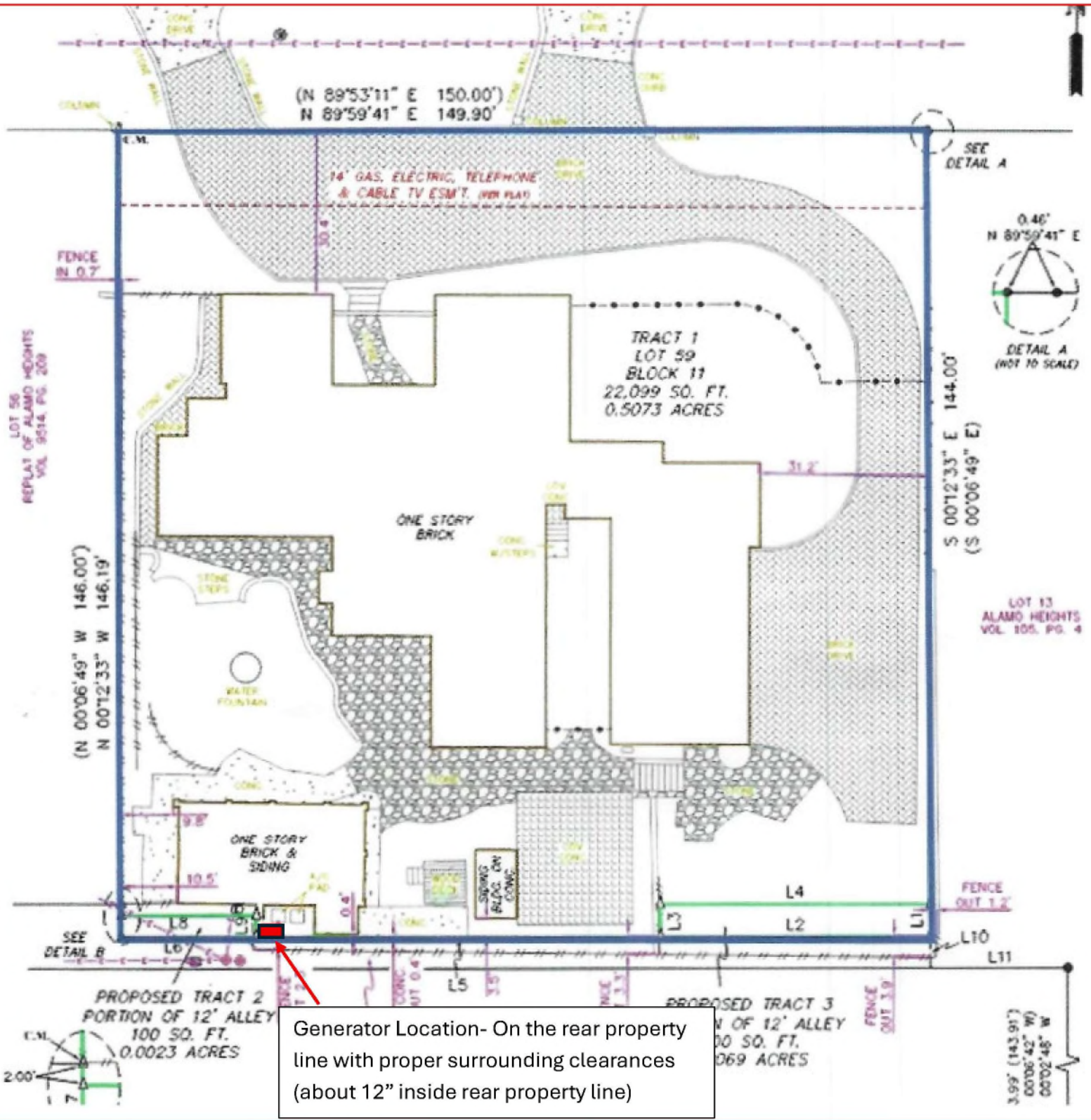
Take notice that a regular meeting of the Board of Adjustment of the City of Alamo Heights will be held on **Wednesday, June 03, 2026, at 5:30pm** in the City Council Chambers, located at 6116 Broadway St, San Antonio, Texas, 78209, to consider and act upon any lawful subjects which may come before it.

Case No. 2476 – 132 Grant Ave

Application of Grant Winston of Grant Winston, applicant, representing Bob McClane, owner, requesting the following variance(s) in order to install a generator at the rear of the property on the property located at **CB 4024 BLK 11 LOT 59**, also known as **132 Grant Ave**, zoned SF-A:

1. A proposed 1ft side yard setback instead of the minimum 3ft required per Section 3-15 and
2. A proposed 1ft rear yard setback instead of the minimum 3ft required per Section 3-16 of the City's Zoning Code.

Plans may be viewed online* (www.alamoheightstx.gov/departments/planning-and-development-services/public-notices) and at the Community Development Services Department located at 6116 Broadway St. You may also contact Garrett Pringle, Planner, (gpringle@alamoheightstx.gov), Tyler Brewer, Senior Planner, (tbrewer@alamoheightstx.gov), or Lety Hernandez, Director, (lhernandez@alamoheightstx.gov) by email or our office at (210) 826-0516 for additional information regarding this case. Please note floor plans will not be available online.





Generator Location



**Neighbor's
Generator
Location**



DG Application Drawing Files

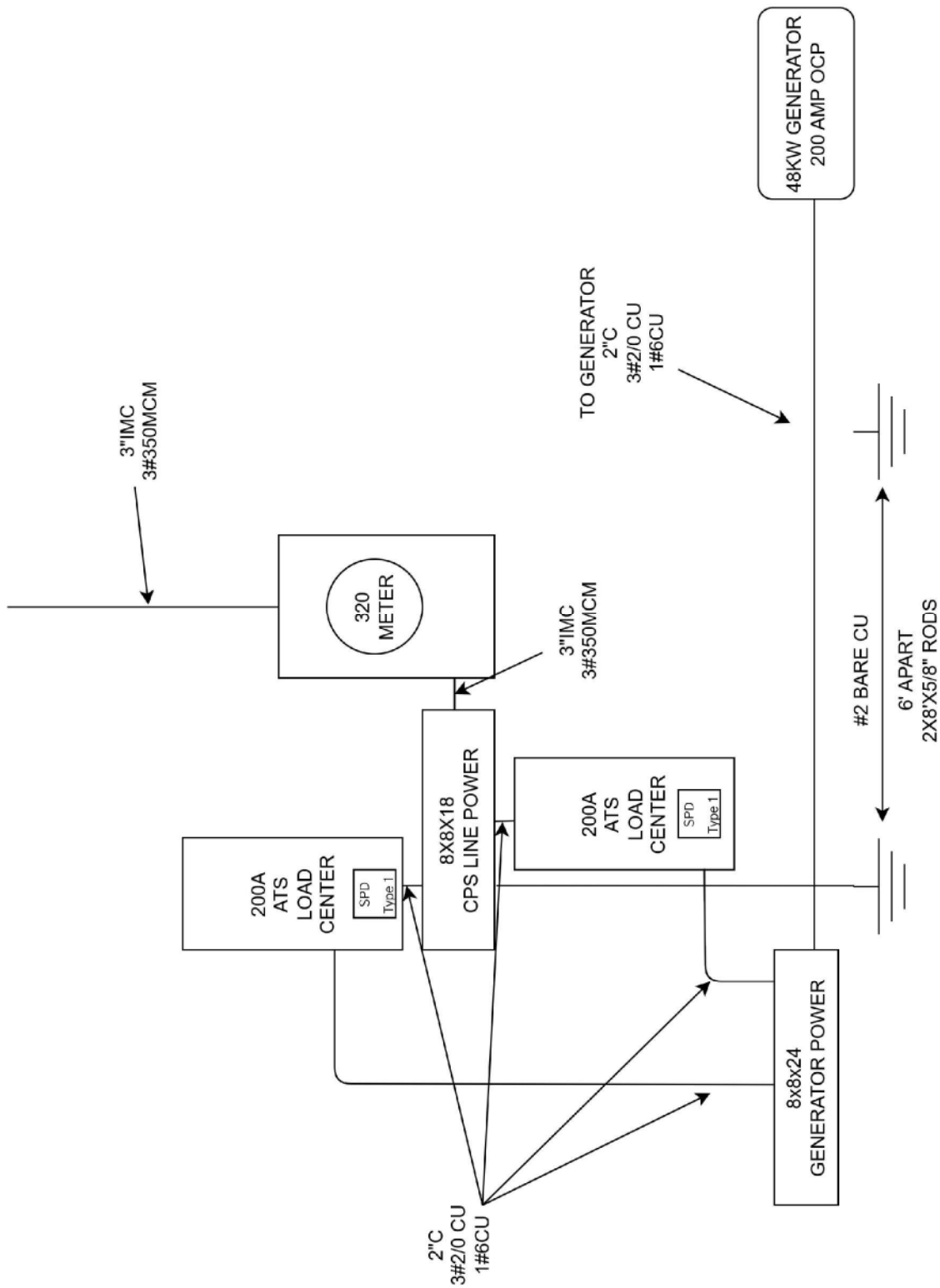
Customer Name	Robert S. MC Clane	Type	Backup
CPS Customer Number		Fuel Source	Natural Gas
Customer Email		Customer Phone	
Customer Address	132 Grant Ave. Alamo Heights, TX 78209	City	Alamo Heights
Generator Brand	Generac	Power Factor	1
Generator Size	30kw	Voltage	240
Generator Model	RG03015	Frequency	60hz
Generator Amps	125amps	Number of Phases	1
MLCB	150amp	Winding Configuration	Single Phase 3 Wire
ATS Model	RXGW20SHA3	Neutral Grounding System Used	Solidly Grounded



📞 210-934-1314

📍 359 W Sunset, San Antonio, TX 78212

TECL #38660



CONTRACTOR		SINGLE LINE DIAGRAM		NOTES
CURRENT POWER TECHNOLOGIES License #: TECL 38660 Contact: Steve Montemayor Email:		PROJECT	132 GRANT AVE. ALAMO HEIGHTS, TX 78209	PER CHIEF ELECTRICAL INSPECTOR AND FIRE DEPARTMENT GENERATOR EMERGENCY SHUT DOWN PLACECARDS X3 (WHITE WITH RED LETTERING—FONT SIZE 50PT) FACTORY INSTALLED PLACECARDS ARE NOT ACCEPTABLE #1 EMERGENCY POWER OFF AT GENERATOR— WITH ARROW POINT TOWARDS THE GENERATOR (LOCATED AT ATS) #2 EMERGENCY DISCONNECT—SERVICE DISCONNECT (LOCATED AT ATS) #3 GENERATOR EPO (LOCATED ON THE GENERATOR)
		CLIENT	BOB MCCLANE 210-822-5354	
		JOB SCOPE	48KW GENERATOR AND (2) 200A ATS LOAD CENTERS	

PROFESSIONAL STATEMENT: TO THE BEST OF THE CONTRACTOR'S KNOWLEDGE THESE PLANS COMPLY WITH THE RELEVANT CODES AND STANDARDS REQUIRED BY THE AUTHORITY HAVING JURISDICTION.

Automatic Transfer Switches

Service Rated Automatic Transfer Switch with 20–40 Circuit Load Center

200 Amps, Single Phase
Model: RXGW20SHA3



Description

Generac Transfer Switches are designed for use with single phase generators that utilize an Evolution™ or Nexus™ Controller. The 200 amp open transition switch is a single phase service entrance rated configuration. An integrated load center with pass through lugs allows branch circuit protection for outbuildings, while also feeding a home's main distribution panel.

Standard Features

Service Rated Generac Automatic Transfer Switches are housed in an aluminum Type 3R enclosure, with electrostatically applied and baked powder paint. The Heavy Duty Generac Contactor is an ETL recognized device, designed for years of service. The controller at the generator handles all the timing, sensing, exercising functions, and transfer commands. The integrated 20 space load center accepts 1 in (25.4 mm) standard, GFCI, AFCI, or tandem circuit breakers from Siemens, Murray, Eaton, and Square D for the most flexible and cost effective install. Utilizing tandem breakers, the load center can be equipped to support up to 40 individual circuits. All switches are covered by a 5 year limited warranty.

Load Management Technology

Through the use of the integrated Smart A/C Module (SACM), these switches have the capability to manage up to four individual HVAC (24 VAC controlled) loads with no additional hardware. When used in tandem with external Smart Management Modules (SMM), a total of eight more loads can be managed, providing the most installation efficient power management options available.

200 Amps, Single Phase**Automatic Transfer Switches****Functions**

All timing and sensing functions originate in the generator controller.

Utility Voltage Drop-out	<65%
Timer to Generator Start	5 Second Factory Set, Adjustable Between 2 - 1,500 Seconds by a Qualified Dealer*
Engine Warmup Delay	5 Seconds
Standby Voltage Sensor	60% for 5 Seconds
Utility Voltage Pickup	>80%
Re-transfer Time Delay	15 Seconds
Engine Cooldown Timer	60 Seconds
Exerciser	Nexus™: 12 Minutes Weekly Evolution™: 5 to 12 Minutes Adjustable, Weekly/Bi-weekly/Monthly
The Transfer Switch can be Operated Manually Without Power Applied	

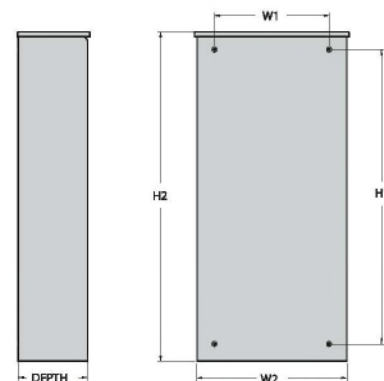
* When used in conjunction with units utilizing Evolution™ controls

Specifications

Model	RXGW20SHA3
Amps	200
Voltage	120/240, 1ø
Load Transition Type (Automatic)	Open Transition Service Rated
Enclosure Type	NEMA 3R
Compliance	ETL
Withstand Rating (Amps)	10,000 22,000*
Integrated Load Center	20–40
*When used with 1 in (25.4 mm) Siemens or Murray breakers.	

Dimensions, Weight, and Wire Ranges

Model		RXGW20SHA3
Height (in/cm)	H1	35.0 / 88.9
	H2	38.5 / 97.8
Width (in/cm)	W1	14.0 / 35.5
	W2	17.6 / 44.7
Depth (in/cm)		8.0 / 20.3
Weight (lbs/kg)		45 / 20.4
Wire Range		#1 - 300 MCM Al/CU 75 °C



RG Protector® Series

Protector® Series Standby Generators Liquid-Cooled Gaseous Engine

STANDARD FEATURES

- Evolution™ Controller
- Padlockable Control Panel Cover
- Cellular Connectivity for Mobile Link® and Fleet¹
- Corrosion Resistant Aluminum Enclosure
- 5 Year/2,000 Hour Limited Warranty
- ±1% Digital Voltage Regulation
- <5% Total Harmonic Distortion Power Quality
- Propane or Natural Gas
- EPA Emissions Certified
- UL 2200 Listed
- SwRI listed (NFPA 37) for installation as close as 18 in (457 mm) from structure²

1 - Cellular service for the US, Canada, and other supported countries using the Generac Generator Connectivity Accessory, Cellular (GGCAC).

2 - Must be located away from doors, windows, and fresh air intakes and in accordance with applicable codes and regulations.

STANDBY POWER RATING

Model RG02515 - 25 kW, 60 Hz Emergency Standby Power Generator
Model RG03015 - 30 kW, 60 Hz Emergency Standby Power Generator



Product may vary from above image



QUIET-TEST

GENERAC

Mobile Link™

*Assembled in the USA using domestic and foreign parts

EPA Emissions Certified

OPTIONAL FIELD-INSTALLABLE FEATURES

- Push-button Emergency Stop
- Cold Weather Operation Heaters

FEATURES

- **INNOVATIVE DESIGN & PROTOTYPE TESTING** are key components of GENERAC'S success in "IMPROVING POWER BY DESIGN." But it doesn't stop there. Total commitment to component testing, reliability testing, environmental testing, destruction and life testing, plus testing to applicable CSA, NEMA, EGSA, and other standards, allows you to choose GENERAC POWER SYSTEMS with the confidence that these systems will provide superior performance.
- **MOBILE LINK® CONNECTIVITY:** Standard with the Generac Liquid-Cooled RG Protector Series home standby generators, Mobile Link Cellular with Wi-Fi® backup allows users to monitor generator status from anywhere in the world using a smartphone, tablet, or PC. Easily access information such as the current operating status and maintenance alerts. Users can connect an account to an authorized service provider for fast, friendly, and proactive service. With Mobile Link, users are taken care of before the next power outage.
- **TRUE POWER™ ELECTRICAL TECHNOLOGY:** Superior harmonics and sine wave form produce less than 5% Total Harmonic Distortion for utility quality power. This allows confident operation of sensitive electronic equipment and micro-chip based appliances, such as variable speed HVAC systems.
- **SOLID-STATE, FREQUENCY COMPENSATED VOLTAGE REGULATION.** This state-of-the-art power maximizing regulation system is standard on all Generac models. It provides optimized FAST RESPONSE to changing load conditions and MAXIMUM MOTOR STARTING CAPABILITY by electronically torque-matching the surge loads to the engine. Digital voltage regulation at ±1%.
- **SINGLE SOURCE SERVICE RESPONSE** from Generac's extensive service network provides parts and service know-how for the entire unit, from the engine to the smallest electronic component.
- **GENERAC TRANSFER SWITCHES:** Long life and reliability are synonymous with GENERAC POWER SYSTEMS. One reason for this confidence is the GENERAC product line is offered with its own transfer systems and controls for total system compatibility.

GENERATOR SPECIFICATIONS

GENERATOR OUTPUT

Propane

Voltage	RG02515		RG03015	
	Power (kW)	Current (A)	Power (kW)	Current (A)
120/240 V 1-Phase	25	104	30	125
208/120 V 3-Phase	25	57	30	104
240/120 V 3-Phase	25	75	30	90

Natural Gas

Voltage	RG02515		RG03015	
	Power (kW)	Current (A)	Power (kW)	Current (A)
120/240 V 1-Phase	25	104	30	125
208/120 V 3-Phase	25	57	30	104
240/120 V 3-Phase	25	75	30	90

Emergency Standby Power (ESP) Rating: Standby ratings apply to installations served by a reliable utility source. The ESP rating is applicable to varying loads for the duration of a power outage. The average power output over 24 hours shall not exceed 70% of the ESP rating.

VOLTAGE REGULATION

Type	Electronic
Sensing	1-Phase
Regulation	± 1%

ALTERNATOR SYSTEM

Circuit Breaker (CB) Size (A)		RG02515	RG03015
		120/240 V 1-Phase	125
208/120 V 3-Phase		100	125
240/120 V 3-Phase		90	100
Alternator Type		Synchronous	
Rotor Insulation Class		H	
Stator Insulation Class		H	
Telephone Interference Factor (TIF)		<50	
Bearings		Sealed Ball	
Coupling		Flexible Disc	
Excitation System		Direct	
Total Harmonic Distortion		<5%	

SURGE CAPACITY

Surge Amps at <0.4 Power Factor	RG02515		RG03015	
	15% Voltage Dip (A)	30% Voltage Dip (A)	15% Voltage Dip (A)	30% Voltage Dip (A)
120/240 V 1-Phase	65	170	75	180
208/120 V 3-Phase	80	130	96	155
240/120 V 3-Phase	69	112	83	134

ENGINE SYSTEM

	RG02515	RG03015
Make	Generac	
Model	1.5 L Inline 4-Cylinder, Naturally Aspirated	
Compression Ratio	11:1	
Lifter Type	Hydraulic	
Oil Pump Type	Gear	
Oil Filter Type	Full Flow Spin-On Cartridge	
Crankcase Capacity (qt (L))	4 (3.8)	
Temperature Derate	1.7% per 10 °F above 77 °F (1.5 °C per 5 °C above 25 °C)	
Altitude Derate	3% per 1,000 ft above 600 ft (1% per 100 m above 183 m)	
Exercise Speed (RPM)	1,800	
Operating Speed (RPM)	3,600	
Exhaust Flow at Rated Output (CFM (m ³ /min))	203 (5.7)	237 (6.7)

GOVERNOR

Type	Electronic
Frequency Regulation	Isochronous

COOLING SYSTEM

Coolant	50/50 (50% Ethylene Glycol)
Coolant System Capacity (US gal (L))	2 (7.6)
Water Pump Type	Belt driven
Fan Type	Belt driven
Fan Quantity	1
Maximum Ambient Air Temperature (°F (°C))	122 (50)

GENERATOR SPECIFICATIONS

FUEL SYSTEM

Fuels	Liquid Propane (LP) Vapor or Natural Gas (NG)
Fuel Type Configuration	Fuel System & Controller Selection
LP Vapor Pressure (in H ₂ O (kPa))	5-14 (1.24-3.48)
NG Pressure (in H ₂ O (kPa))	5-14 (1.24-3.48)
Fuel Shutoff Solenoid	Standard

FUEL CONSUMPTION

LIQUID PROPANE

Rated Load	RG02515		RG03015	
	(US gph)	(L/h)	(US gph)	(L/h)
No Load @ Exercise Speed	0.7	2.5	0.7	2.5
25%	2.9	9.1	2.6	10.0
50%	3.3	12.3	3.5	13.3
75%	4.0	15.0	4.4	16.6
100%	4.7	17.8	5.4	20.4

Propane - 91,452 BTU/US gal (25.5 MJ/L); 36 ft³/US gal (0.27 m³/L); 2,516 BTU/ft³ (93.7 MJ/m³); 4.24 lb/US gal (0.508 kg/L)

NATURAL GAS

Rated Load	RG02515		RG03015	
	(CFH)	(m ³ /h)	(CFH)	(m ³ /h)
No Load @ Exercise Speed	60	1.7	60	1.7
25%	220	6.3	240	6.8
50%	297	8.4	320	9.1
75%	362	10.3	400	11.4
100%	430	12.2	492	14.0

Natural Gas - 1,036 BTU/ft³ (37.3 MJ/m³)

See Emissions Data Sheets for maximum fuel flow for EPA and SCAQMD permitting purposes.

ELECTRICAL SYSTEM

System Voltage (V)	12
Charge Alternator (A)	15
Battery Charger (A)	2.5
Recommended Battery (not included)	Group 26, Flooded Lead Acid, 525 CCA Minimum

ENCLOSURE

	RG02515	RG03015
Sound Level at Exercise Speed (dB(A) @23 ft (7 m))	59	59
Sound Level at Operating Speed & No Load (dB(A) @23 ft (7 m))	72	73
Color	Bisque	

EVOLUTION CONTROLLER FEATURES

Two-Line Plain Text LCD	Simple user interface for ease of operation.
Mode Switch: AUTO	Automatic Start on Utility failure. 7 day exerciser.
OFF	Stops unit. Power is removed. Control and charger still operate.
MANUAL	Start with starter control, unit stays on. If utility fails, transfer to load takes place.
Programmable start delay between 10 – 30 seconds	Standard 10 sec
Engine Start Sequence	Cyclic cranking: 16 sec on, 7 rest (90 sec maximum duration)
Engine Warm-up	5 sec
Engine Cool-Down	1 min
Starter Lock-out	Starter cannot re-engage until 5 sec after engine has stopped.
Smart Battery Charger	Standard
Automatic Voltage Regulation with Over and Under Voltage Protection	Standard
Automatic Low Oil Pressure Shutdown	Standard
Overspeed Shutdown	Standard, 72 Hz
High Temperature Shutdown	Standard
Overcrank Protection	Standard
Safety Fused	Standard
Failure to Transfer Protection	Standard
Low Battery Protection	Standard
50 Event Run Log	Standard
Future Set Capable Exerciser	Standard
Incorrect Wiring Protection	Standard
Internal Fault Protection	Standard
Common External Fault Capability	Standard
Governor Failure Protection	Standard

FIELD-INSTALLABLE ACCESSORIES & KITS

PRODUCT	PART NUMBER	DESCRIPTION
Control System Kits		
Generac Generator Connectivity Accessory, Cellular (GGCAC)	G0072150	The GGCAC provides a reliable cellular connection for the generator with Wi-Fi backup. Monitoring of the generator is possible for the owner using Mobile Link and for the servicer using Fleet. The GGCAC can be installed on any generator that already has a Wi-Fi-only device to upgrade to cellular connectivity. NEW RG02515 and RG03015 generators include the GGCAC as standard.
GGCAC Wire Harness Adapter	A0005166075	Wire harness adapter required to connect the G0072150 Generac Generator Connectivity Accessory Cellular to the wire harness of <u>already installed generators which have the Wi-Fi only device</u> . NEW RG02515 and RG03015 generators include the GGCAC as standard.
Enclosure Mounted Emergency Stop Kit	G0065100	Emergency stop consists of a red push button switch. It mounts to the exterior of the generator enclosure replacing the generator emergency shutdown rocker switch in the same location.
Generac Load Manager, 50 A	G0070001	50 A Load Manager helps optimize the performance of the standby generator by managing large electrical loads upon startup and sheds them to aid in recovery when overloaded.
Generac Load Manager, 100 A	G0070061	100 A Load Manager helps optimize the performance of the standby generator by managing large electrical loads upon startup and sheds them to aid in recovery when overloaded.
Generac LTE Propane Tank Fuel Level Monitor	G0070090	The Propane Tank Fuel Level Monitor connects to 4G LTE cellular service to measure and report amount of LP fuel remaining in the tank. The app alerts the user of both remaining LP fuel and usage reports, offering the ultimate peace of mind.
Operating Environment Kits		
Battery Heater Kit	G0091750	Recommended for operating environments where the temperature drops below 32 °F (0 °C). The heater is externally powered by 120 VAC, 60 Hz. The kit is compatible with RG02515 and RG03015.
Engine Block Heater Kit	G0061740	Recommended for operating environments where the temperature drops below 0 °F (-18 °C). The heater is externally powered by 120 VAC, 60 Hz. The kit is compatible with RG02515 and RG03015.
Installation Kits		
Base Plug Kit	G0056510	Base plugs to fit in the lifting holes of the baseframe to keep debris out.
Maintenance Kits		
1.5 L NA Gaseous Engine Regular Maintenance Kit	G0056560	Regular maintenance kit includes oil filter, oil funnel, air filter, and spark plugs. The kit applies to RG02515 and RG03015 generator models.
Touch-up Paint Kit	G0057030	If the generator enclosure is scratched or damaged, it is important to touch-up the paint to protect from future corrosion. The paint kit includes the necessary paint to correctly maintain or touch-up a generator enclosure.

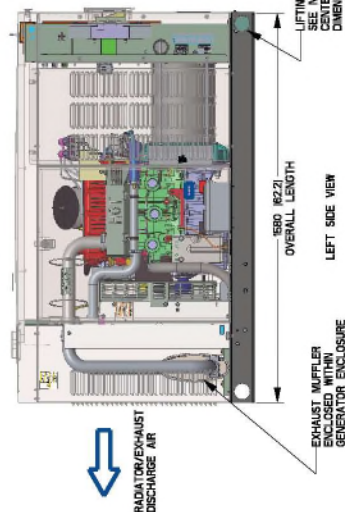
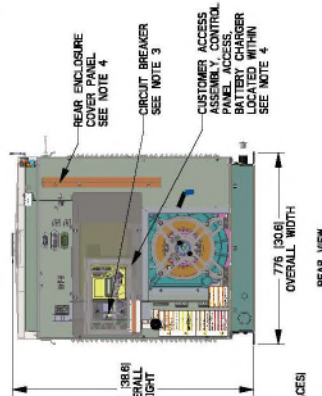
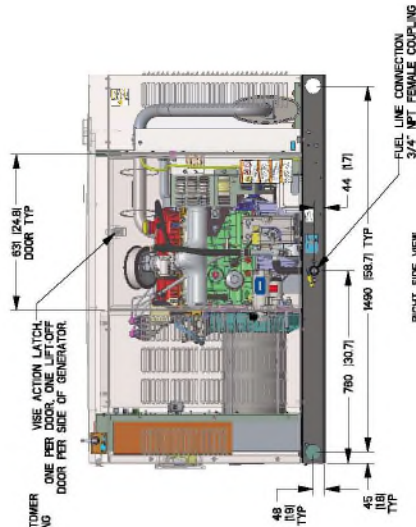
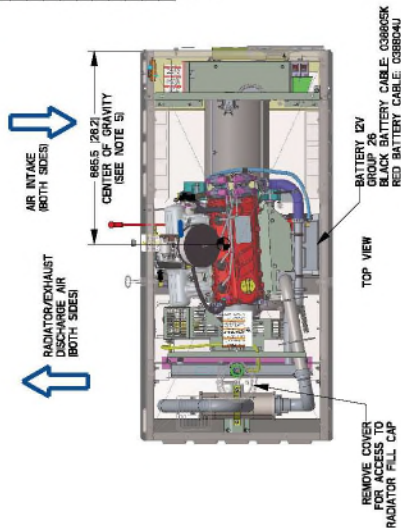
25 & 30 KW

Drawing #OK8420-G (1 of 2)

- NOTES:**
- MINIMUM RECOMMENDED CONCRETE PAD SIZE IS 6" OFFSET OF OVERALL LENGTH AND WIDTH OF GENERATOR. (8621 (4281) WIDE X 18847 (7427) LONG). REFERENCE INSTALLATION GUIDE SUPPLEMENT WITH THE UNIT FOR CONCRETE PAD GUIDELINES. RECOMMENDED CONCRETE PAD THICKNESS IS 4" WITH REINFORCING BARS AND REINFORCED SLABS.
 - ALLOW SUFFICIENT ROOM ON ALL SIDES OF THE GENERATOR FOR MAINTENANCE AND SERVICING. THIS UNIT MUST BE INSTALLED IN ACCORDANCE WITH CURRENT APPLICABLE NFPA 37 AND NFPA 70 STANDARDS AS WELL AS ANY OTHER FEDERAL, STATE, AND LOCAL CODES.
 - CONTROL PANEL AND CIRCUIT BREAKER INFORMATION:
 - SEE SPECIFICATION SHEET OR OWNERS MANUAL.
 - ACCESS THROUGH CUSTOMER ACCESS ASSEMBLY DOOR ON REAR OF GENERATOR. THE STAIR AREA AS FOLLOWS: REMOVE COVER PANEL TO ACCESS.
 - HIGH VOLTAGE CONNECTION INCLUDING AC LOAD LEAD CONDUIT CONNECTION.
 - NEUTRAL CONNECTION, BATTERY CHARGER 120 VOLT AC 10.5 AMP MAXI CONNECTION.
 - USE CONNECTION INCLUDING TRANSFER SWITCH CONNECTIONS.
 - CONTROL PANEL AND CIRCUIT BREAKER INFORMATION.
 - RECOMMENDATION TO PREVENT PEST INTRUSION AND REPRODUCTION OF DISCHARGE AIR AND/OR IMPROPER COOLING AIR FLOW.
 - EXHAUST SYSTEM MAXIMUM BACK PRESSURE 24 INCHES H2O.
 - RECOMMENDATION TO PREVENT PEST INTRUSION AND REPRODUCTION OF DISCHARGE AIR AND/OR IMPROPER COOLING AIR FLOW.
 - RECOMMENDED MOUNTING BOLTS OR STUDS TO MOUNTING SURFACE SHALL BE 1/2" DIAMETER (SEE STANDARD SAE TORQUE SPECS).
 - SEE OWNER'S MANUAL FOR MOUNTING DIMENSIONS.
 - MUST ALLOW FREE FLOW OF INTAKE AIR, DISCHARGE AIR AND EXHAUST. SEE SPEC FOR MOUNTING DIMENSIONS.
 - GENERATOR MUST BE INSTALLED SUCH THAT FRESH COOLING AIR IS AVAILABLE AND THAT DISCHARGE AIR FROM RADATOR IS NOT REDIRCLATED.
 - EXHAUST MUFFLER ENCLOSED WITHIN GENERATOR ENCLOSURE.
 - REMOVE ENCLOSURE TO ACCESS EXHAUST MUFFLER.

SERVICE ITEM	LEVEL
OIL FILL CAP	EITHER DOOR
OIL DIP STICK	RIGHT DOOR
OIL FILTER	RIGHT DOOR
OIL DRAIN HOSE	RIGHT DOOR
RADIATOR DRAIN HOSE	RIGHT DOOR
AIR CLEANER ELEMENT	RIGHT DOOR
SPARK PLUGS	RIGHT DOOR
FAN BELT	SEE NOTE 12
BATTERY	EITHER DOOR
	LEFT DOOR

REFERENCE OWNERS MANUAL FOR PARTS AND REPLACEMENT PART LISTINGS.



ENGINE/KW	WEIGHT DATA			
	ENCLOSURE MATERIAL	WEIGHT GENSET ONLY	WEIGHT SHIPPING SKID	SHIPPING WEIGHT
	KG (LBS)	KG (LBS)	KG (LBS)	KG (LBS)
15L/25KW	ST	352 (865)	30 (66)	422 (921)
15L/30KW	ST	408 (896)	30 (66)	436 (961)
15L/25KW	AL	352 (777)	30 (66)	382 (843)
15L/30KW	AL	366 (807)	30 (66)	396 (873)

INSTALLATION DRAWING

25 & 30 KW

Drawing #OK8420-G (2 of 2)

NOTE - STUB-UP AREA FOR HIGH AND LOW VOLTAGE CONNECTIONS. CIRCUIT BREAKER, NEUTRAL AND CUSTOMER CONNECTION OPENING.

