

**BOARD OF ADJUSTMENT  
CASE NO. 2408  
126 WILDROSE AVE**



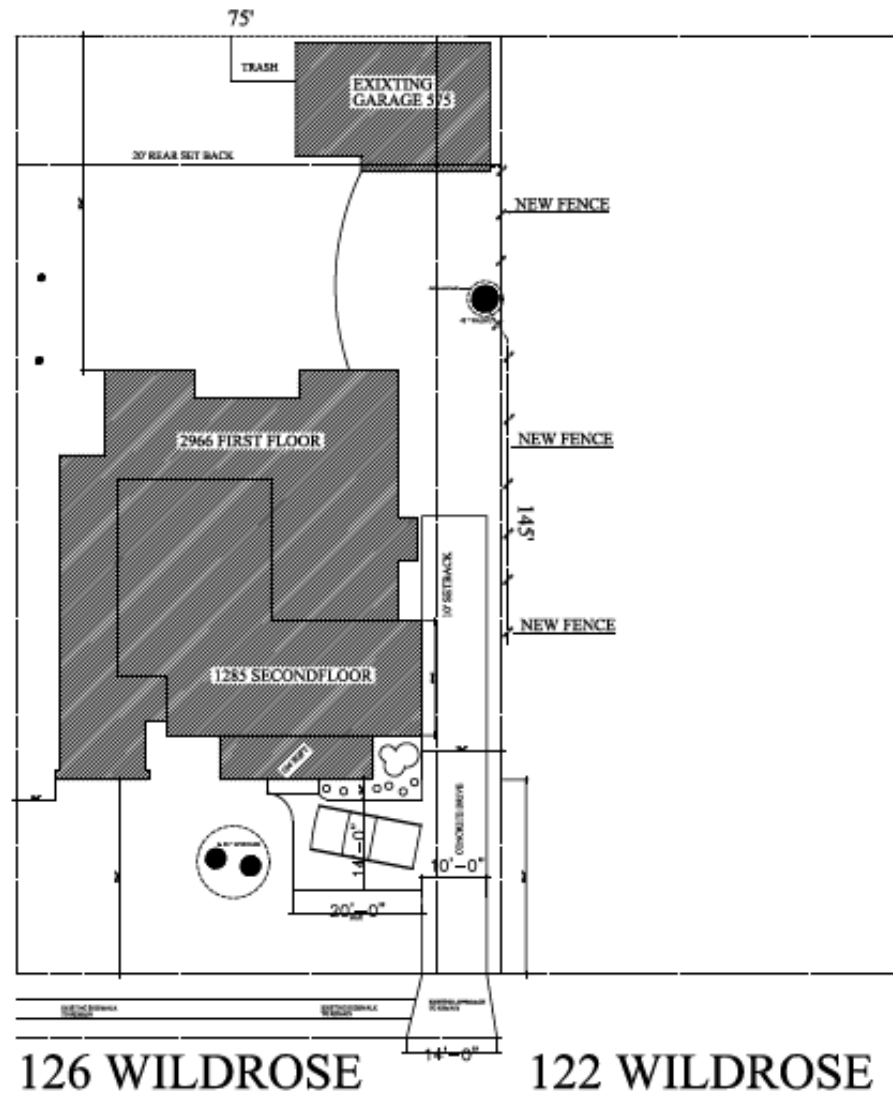
**COMMUNITY DEVELOPMENT**

Presented by:  
Lety Hernandez  
Director



# PROPOSED

OVERALL HEIGHT:  
9 FT



# VIEW FROM 126 WILDROSE



# VIEW FROM ADJOINING PROPERTY



# POLICY ANALYSIS

- **Hardships**
  - None.
- **Considerations**
  - Zoning Code allows placement of an 8ft tall fence/wall at side and rear yard property lines, outside the minimum front yard setback area, as measured from the lower grade of such fence.



