

**BOARD OF ADJUSTMENT  
CASE NO. 2476  
132 GRANT AVE**

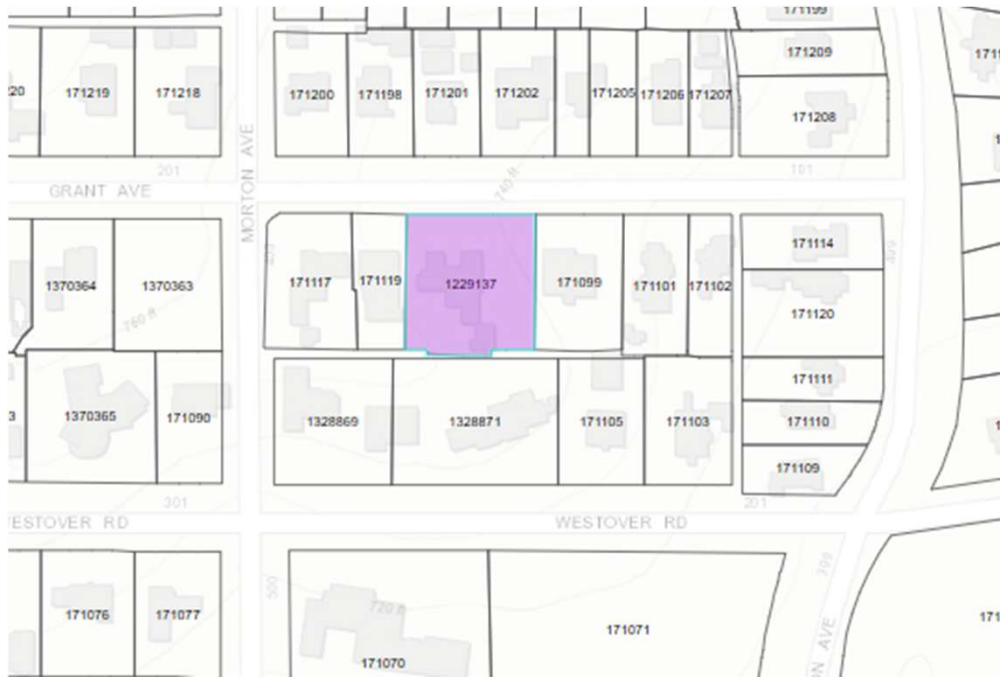


**COMMUNITY DEVELOPMENT**

Presented by:  
Tyler Brewer  
Senior Planner



# PROPERTY

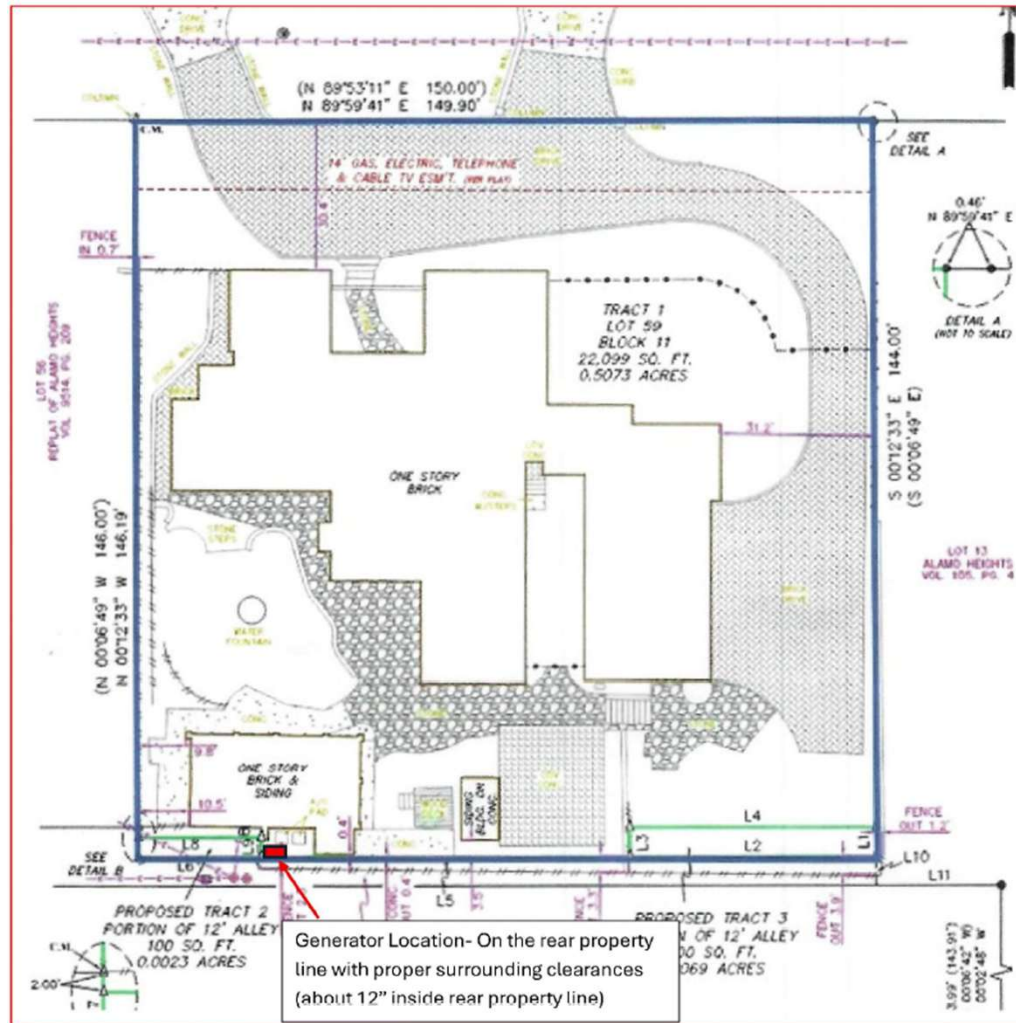


- SF-A
- South side of Grant Ave, east of Morton Ave
- New generator

# EXISTING CONDITIONS



# SURVEY/PROPOSED GENERATOR LOCATION



# AERIAL W/ PROPOSED GENERATOR LOCATION



# GENERATOR



# POLICY ANALYSIS

- **Hardships**
  - Lot shape





# PUBLIC NOTIFICATION

- Postcards - mailed to property owners within a 200-foot radius
- Notices posted - City website and on property
- Responses received within 200ft:
  - Support: (0)    Opposed: (0)    Neutral: (0)
- Responses received outside 200ft:
  - Support: (0)    Opposed: (0)    Neutral: (0)

