

# PLANNING & ZONING COMMISSION

## CASE NO. 412



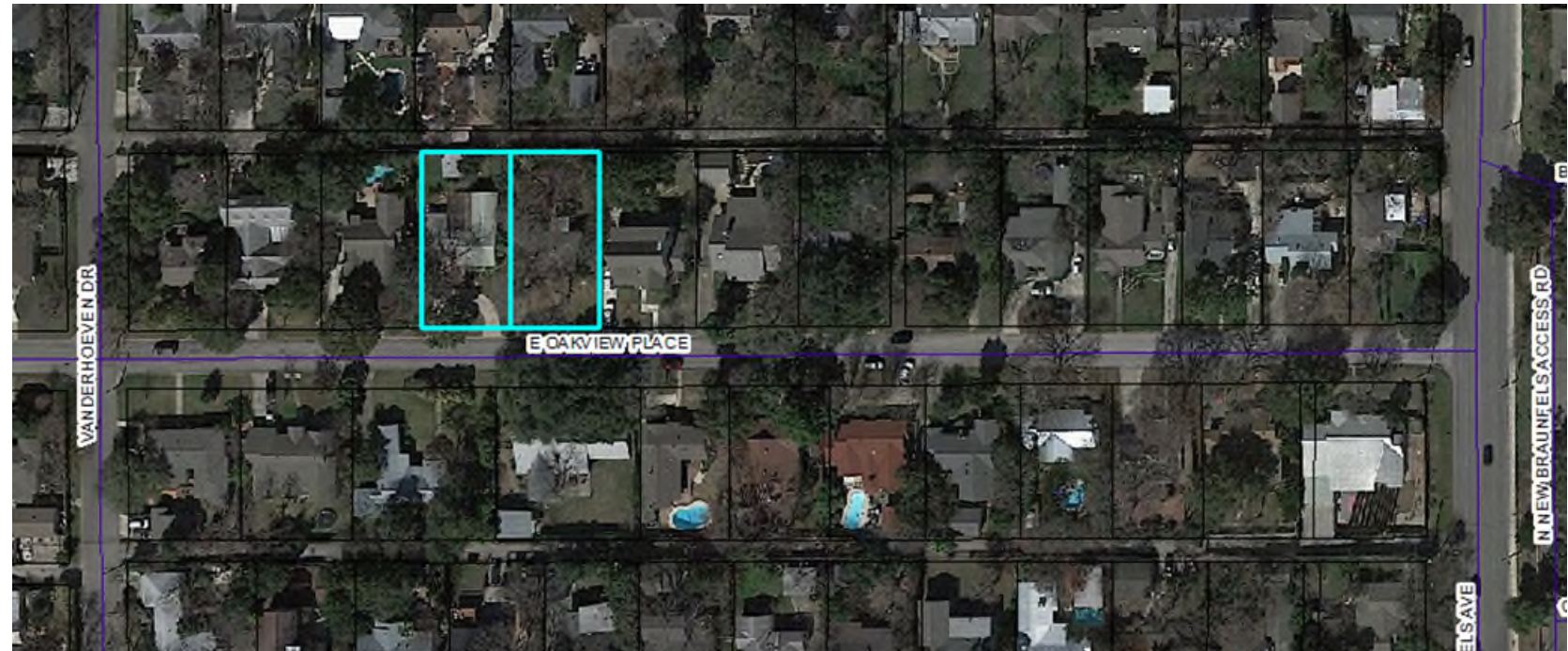
APRIL 5, 2021

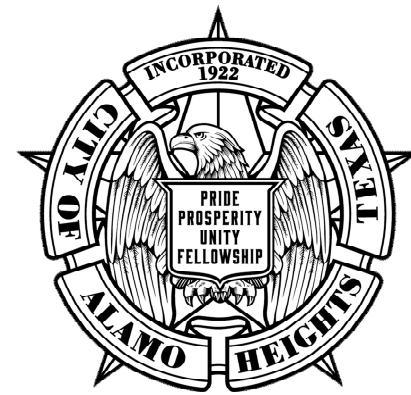
REPLAT — 217 & 225 OAKVIEW E.

Community Development  
Services

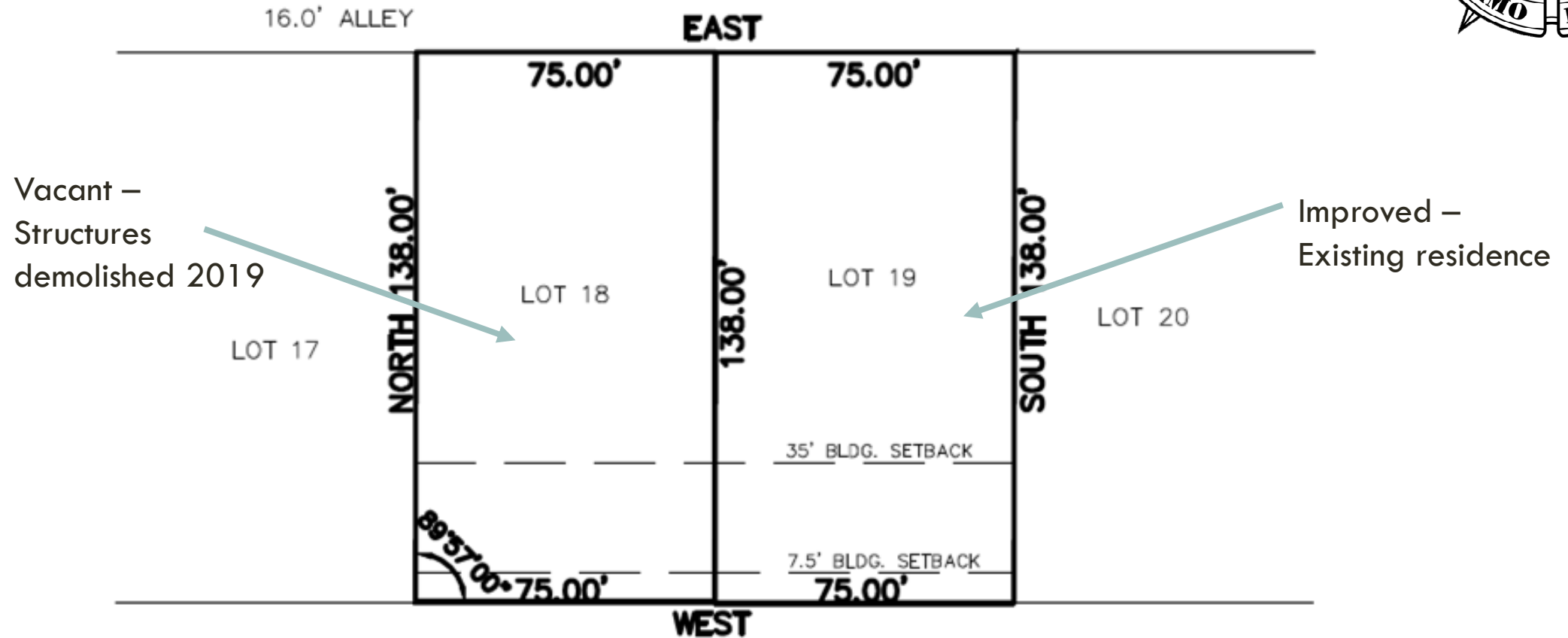
# PROPERTIES

- Zoned SF-A
- Located on north side of Oakview E between Vanderhoven and N. New Braunfels
- Join 217 Oakview and 225 Oakview

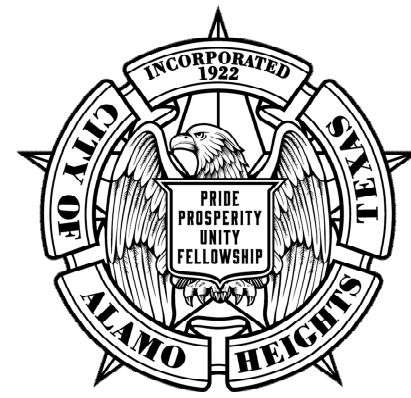




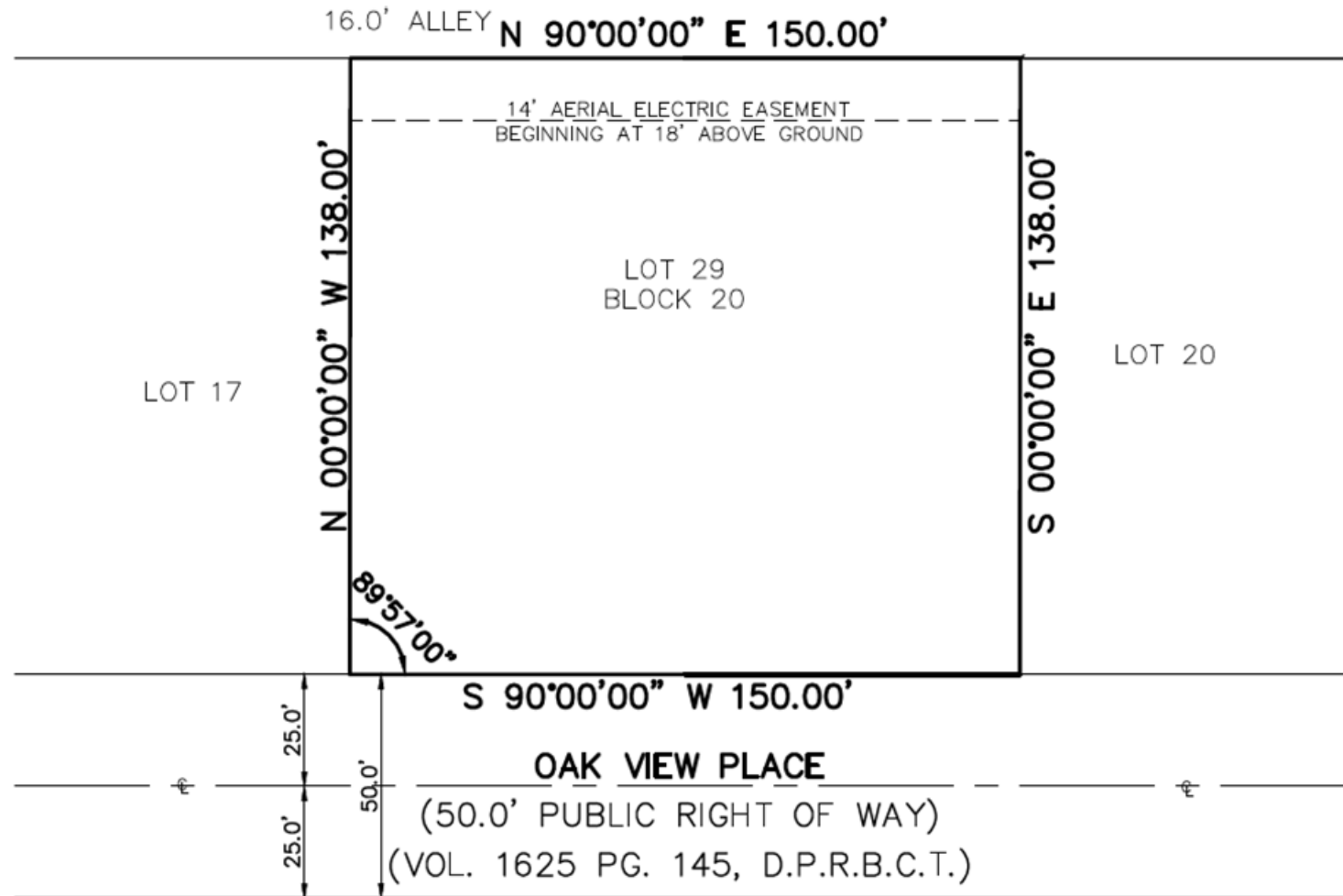
# EXISTING CONDITIONS

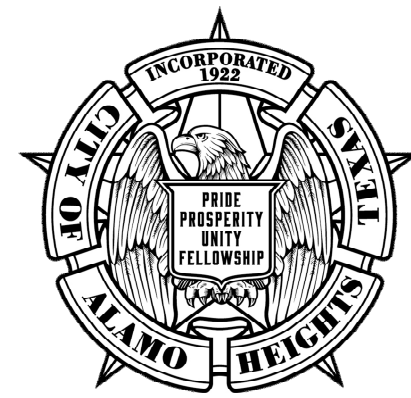


**OAK VIEW PLACE**  
(50.0' PUBLIC RIGHT OF WAY)  
(VOL. 1625 PG. 145, D.P.R.B.C.T.)



# PROPOSED





# POLICY ANALYSIS

- Utility Coordination
  - CPS
  - SAWS
  - Public Works
  - Utility easements have been established
  
- Meets all the technical requirements of Chapter 17 of the Subdivision Code



# PUBLIC NOTIFICATION

- Postcards - mailed to property owners within a 200-foot radius
- Notices - posted on City website and on property
- Legal Notice – posted in official newspaper of the City
- Responses received:
  - Support: (2)                      Neutral: (0)
  - Oppose: (1)